

PARTS LIST FOR
3504 SERIES
PORTABLE/ALUMINUM
GASOLINE DRIVEN/BELT DRIVE
COLD WATER PRESSURE WASHER

Engine Oil Grade:	SAE 10W-30
Engine Oil Capacity:	37 oz.
Pump Oil Grade:	Pump Oil #AW-4085-0016
Pump Oil Capacity:	General 40.6 oz. AR 15 oz.
Nozzle Size:	4.0

This Parts Listing has been compiled for your benefit. You can be assured your new Cold Water Pressure Washer was constructed and designed with quality and performance in mind using over 25 years experience in the pressure washer business. Each component has been rigorously tested to insure the highest level of acceptance.

The contents of this Parts Listing are based on the latest product information available at the time of publication. The manufacturer reserves the right to make changes in price, color, materials, equipment, specifications or models at any time without notice.

WARNING

THIS IS A PROFESSIONAL HIGH PRESSURE, COLD WATER PRESSURE WASHER. CAUTION SHOULD BE OBSERVED WHEN USING OR REPAIRING THIS UNIT! READ AND FOLLOW THE SAFETY WARNINGS LISTED BELOW BEFORE ATTEMPTING ANY REPAIRS ON THIS PRESSURE WASHER!

SAFETY WARNINGS

1. NEVER alter or modify the equipment. Be sure any accessory items and system components being used will withstand the pressure developed. Use only genuine manufactured parts for repair of your pressure washer. Failure to do so can cause hazardous operating conditions and will VOID warranty.
2. NEVER make adjustments on machinery while the unit is connected to the engine without first removing the ignition cables from the spark plugs. Turning over the machinery by hand during adjustment or cleaning might start the machinery, causing serious injury to the operator.
3. Know how to stop and bleed pressures quickly. Be thoroughly familiar with controls.
4. Before servicing the unit, turn unit off, relieve the water pressure and allow the unit to cool down. Do not make repairs while the unit is running. Service in a clean, dry, flat area.
5. After testing the machine, DO NOT leave the pressurized unit unattended. Shut off the unit and release trapped pressure before leaving.

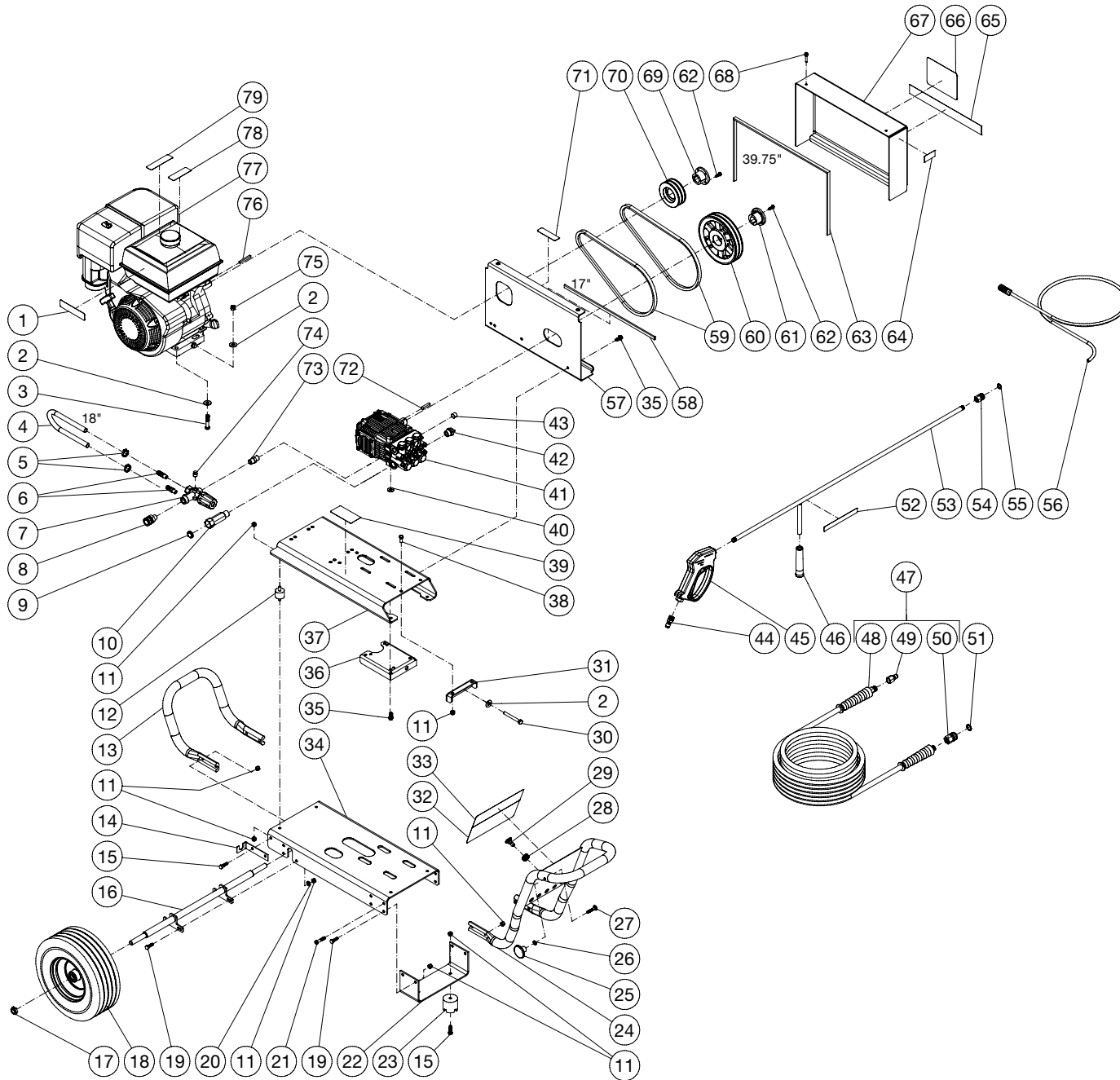
Table of Contents

SPECIFICATIONS.....	3
FRAME ASSEMBLY WITH AR PUMP.....	4
FRAME ASSEMBLY WITH GENERAL PUMP	6
PUMP ASSEMBLY (3-0308)	8
PUMP ASSEMBLY (3-0203)	10
UNLOADER ASSEMBLY (8-0361)	12

SPECIFICATIONS

Operating Pressure (PSI/Bar):	3504 / 241.3			
High Pressure Nozzle:	4.0			
Water Volume (GPM/lpm):	3.7 / 14.0			
Engine:	Honda		Kohler	
Model	GX390		CH440	
Engine Type	4 Stroke, Overhead Valve, Single Cylinder			
Oil Type	SAE10W-30			
Oil Capacity (oz./liters)	37 / 1.1			
Low Oil Protection	Oil Alert™		Oil Sentry	
Fuel Type	Unleaded Gasoline 86 Octane Minimum			
Fuel Capacity (gallon/ liters)	1.61 / 6.1			
Starting	Recoil			
Maximum No Load RPM	3600			
Pump:	General	AR	General	AR
Pump Type	Belt Driven, Oil Bath, Triplex Piston			
Oil Type	Pump Oil #AW-4085-0016			
Oil Capacity (oz./liters)	18.5 / .55			
Plungers	Ceramic			
Manifold	Forged Brass			
Valves	Stainless Steel			
Unloader	Adjustable			
Thermal Relief Valve	Relieves heated water during unloader bypass stage			
Unit Net Weight (Lbs/kg)	159 / 72.12	143 / 64.86	162 / 73.48	146 / 66.22
Unit Shipping Weight (Lbs/kg)	222.94 / 101.12	206.94 / 93.87	225.94 / 102.48	209.94 / 95.23
Unit Net Dimension (In/cm)	46.5L x 28W x 27.5H /118L x 71W x 70H			
Unit Shipping Dimension (In/cm)	48L x 30W x 34H /122L x 76W x 86H			

FRAME ASSEMBLY WITH AR PUMP



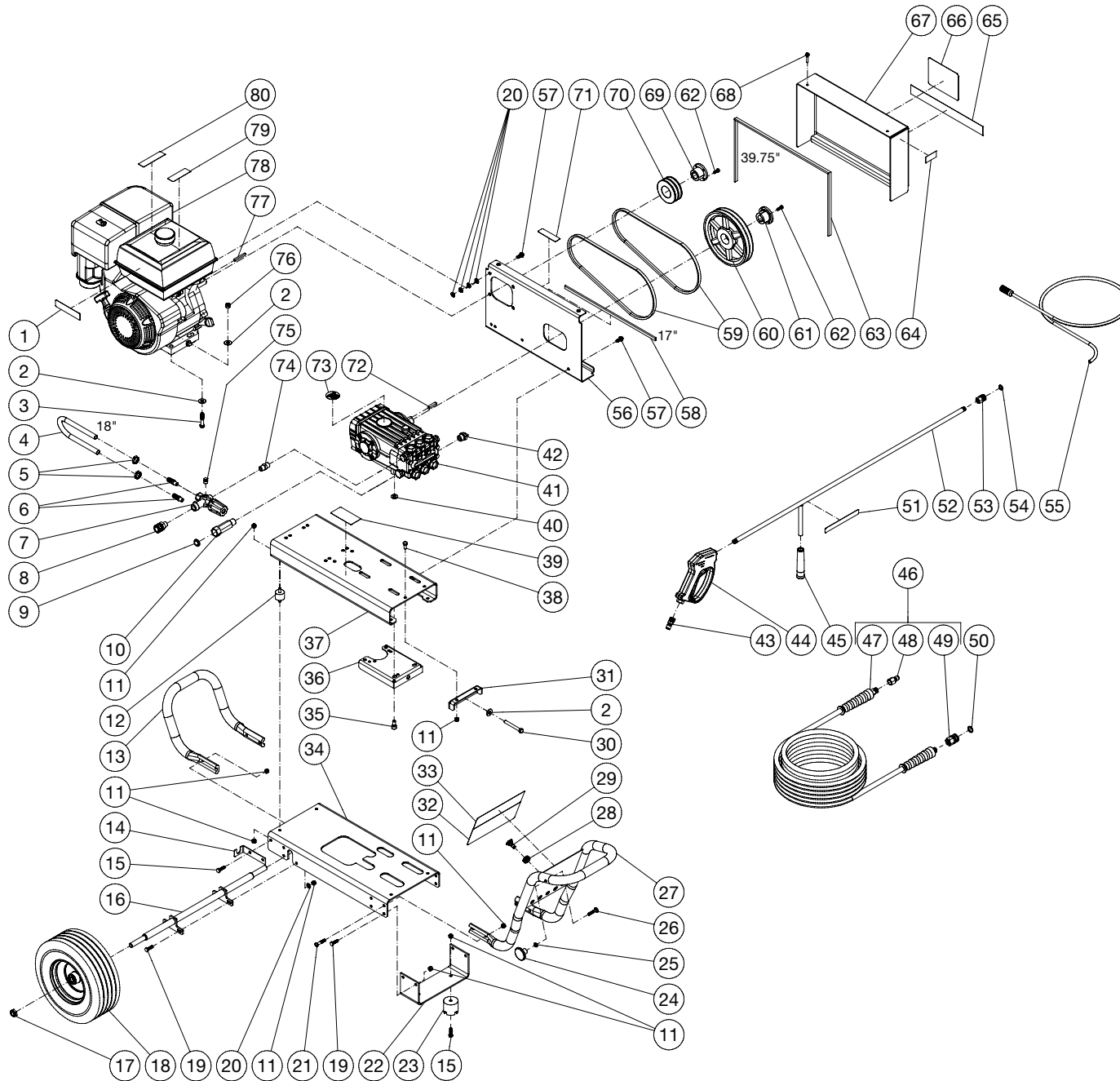
DC-3504-BA0H6A_BA0K6A 040219 TJM

FRAME ASSEMBLY

ITEM	DESCRIPTION	PART #	QTY	ITEM	DESCRIPTION	PART #	QTY
1	DECAL	N/A	1	40	WASHER	28-0022	4
2	WASHER	28-0023	9	41	PUMP	3-0308	1
3	BOLT	27-0121	4	42	RELIEF VALVE	22-0005	1
4	HOSE *(TWO FEET REQUIRED)	15-0007	1	43	PLUG	23-0244	1
5	HOSE CLAMP	42-0011	2	44	QUICK CONNECT	17-0005	1
6	HOSE BARB	23-0120	2	45	GUN	16-0483	1
7	UNLOADER	8-0361	1	46	GRIP	7-0002	1
8	QUICK CONNECT SOCKET	17-0007	1	47	PRESSURE HOSE ASSEMBLY	851-0338	1
9	FILTER	19-0001	1	48	HOSE	15-0209	1
10	INLET FITTING	23-0516	1	49	QUICK CONNECT	17-0006	1
11	LOCKNUT	30-0157	28	50	QC SOCKET	17-0004	1
12	ISOLATOR	14-0097	4	51	O-RING	25-0123	1
13	HANDLE	7-0183	1	52	DECAL - RISK OF INJECTION (SEE 71-1065)	N/A	1
14	WAND HOLDER	20-1516A53	1	53	WAND (INC GRIP & QC)	16-0439	1
15	BOLT	27-0068	6	54	QUICK CONNECT	17-0001	1
16	AXLE	20-0864A01	1	55	O-RING	25-0122	1
17	LOCKNUT	30-0117	2	56	DETERGENT HOSE	19-0233	1
18	WHEEL	14-0150	2	57	BELTGUARD BACK	6-0106	1
19	BOLT	27-0067	8	58	EDGING (TWO FEET REQUIRED)	33-0020	1
20	WASHER	28-0003	4	59	BELT	11-0031	2
21	BOLT	27-0069	4	60	SHEAVE	10-0035	1
22	BRACKET	56-0054	1	61	BUSHING	9-0017	1
23	ISOLATOR	14-0008	2	62	BOLT	27-0015	4
24	HANDLE	7-0182	1	63	EDGING (FOUR FEET REQUIRED)	33-0020	1
25	KNOB	7-0269	1	64	DECAL - MADE IN USA	34-3553	1
26	LOCKWASHER	29-0110	1	65	DECAL - STRIPE	N/A	1
27	BOLT	31-0048	1	66	DECAL - LOGO	N/A	1
28	GROMMET	33-0001	5	67	BELTGUARD FRONT	6-0179	1
29	NOZZLE 3504	18-0397	1	68	BOLT	27-8898	2
-	NOZZLE 3504	18-0399	1	69	BUSHING	9-0005	1
-	NOZZLE 3504	18-0400	1	70	SHEAVE	10-0074	1
-	NOZZLE 3504	18-0401	1	71	DECAL - BELTGUARD IN PLACE (SEE 71-1065)	N/A	1
30	BOLT	27-0576	1	72	PUMP KEY	43-0091	1
31	TIGHTENER BRACKET	21-0218	1	73	NIPPLE	24-0010	1
32	DECAL - WARNING/CAUTION/OPERATION (SEE 71-1065)	N/A	1	74	PLUG	23-0238	1
33	DECAL	N/A	1	75	LOCKNUT	30-0159	4
34	BASEPLATE	5-0222	1	76	KEY	43-0078	1
35	BOLT	27-9524	7	77	ENGINE - HONDA	1-0086	1
36	TIGHTENER BRACKET	21-0220	1	-	ENGINE - KOHLER	1-0208	1
37	ISOLATION PLATE	5-0223	1	78	DECAL - RISK OF FIRE (SEE 71-1065)	N/A	1
38	BOLT	27-0066	2	79	DECAL - RISK OF BURNS (SEE 71-1065)	N/A	1
39	DECAL- SILVER STICKER	N/A	1	-	DECAL SET	71-1065	1

*MUST ORDER IN ONE FOOT LENGTHS

FRAME ASSEMBLY WITH GENERAL PUMP

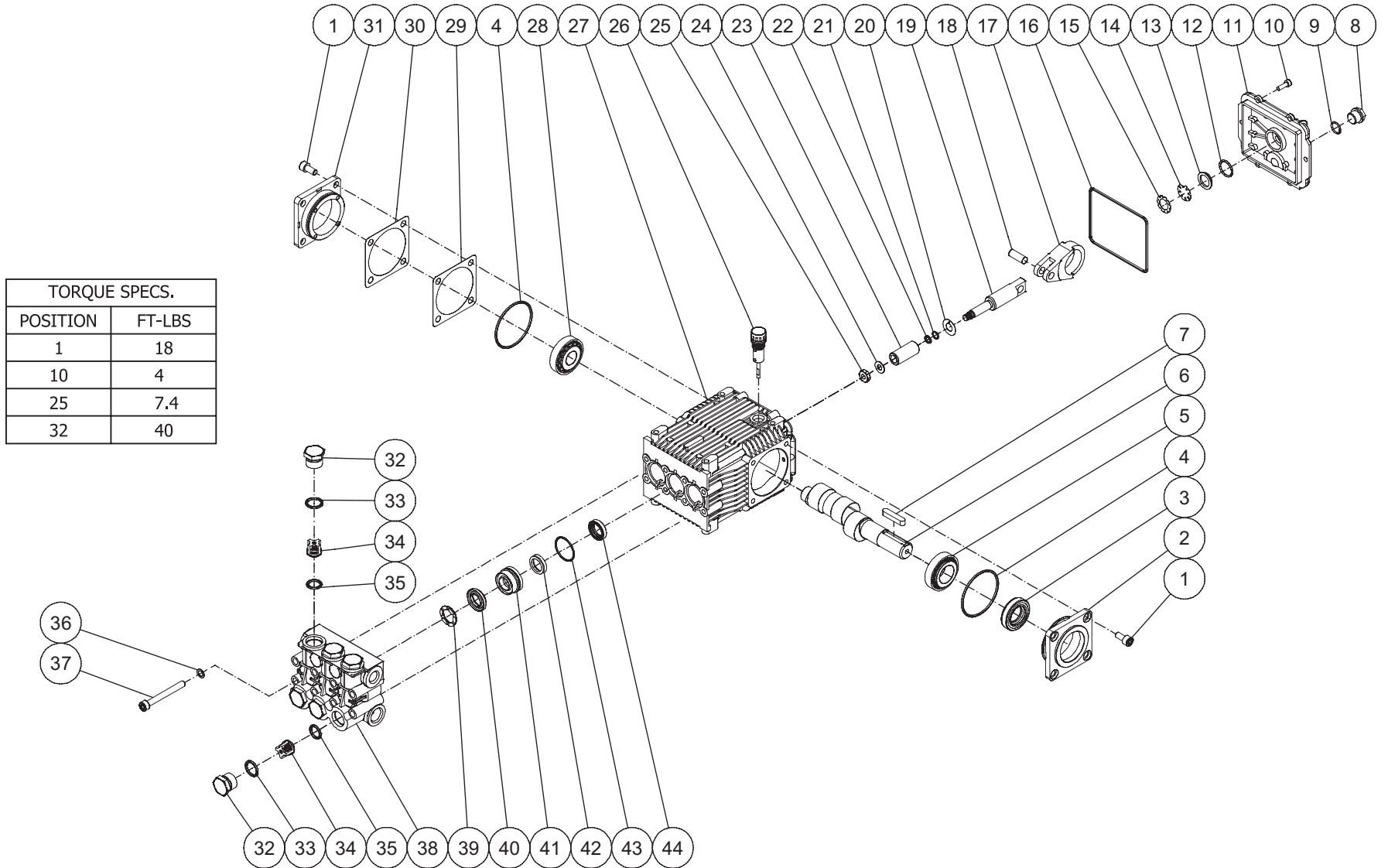


DC-3504-BA0H6G_BA0K6G 040119 T.JM

FRAME ASSEMBLY

ITEM	DESCRIPTION	PART #	QTY	ITEM	DESCRIPTION	PART #	QTY
1	DECAL	N/A	1	41	PUMP	3-0203	1
2	WASHER	28-0023	9	42	RELIEF VALVE	22-0005	1
3	BOLT	27-0121	4	43	QUICK CONNECT	17-0005	1
4	HOSE *(TWO FEET REQUIRED)	15-0007	1	44	GUN	16-0483	1
5	HOSE CLAMP	42-0011	2	45	GRIP	7-0002	1
6	HOSE BARB	23-0120	2	46	PRESSURE HOSE ASSEMBLY	851-0338	1
7	UNLOADER	8-0361	1	47	HOSE	15-0209	1
8	QUICK CONNECT SOCKET	17-0007	1	48	QUICK CONNECT	17-0006	1
9	FILTER	19-0001	1	49	QC SOCKET	17-0004	1
10	INLET FITTING	23-0516	1	50	O-RING	25-0123	1
11	LOCKNUT	30-0157	28	51	DECAL - RISK OF INJECTION (SEE 71-1065)	N/A	1
12	ISOLATOR	14-0097	4	52	WAND (INC GRIP & QC)	16-0439	1
13	HANDLE	7-0183	1	53	QUICK CONNECT	17-0001	1
14	WAND HOLDER	20-1516A53	1	54	O-RING	25-0122	1
15	BOLT	27-0068	6	55	DETERGENT HOSE	19-0233	1
16	AXLE	20-0864A01	1	56	BELTGUARD BACK	6-0148	1
17	LOCKNUT	30-0117	2	57	BOLT	27-9524	5
18	WHEEL	14-0150	2	58	EDGING (TWO FEET REQUIRED)	33-0020	1
19	BOLT	27-0067	8	59	BELT	11-0008	2
20	WASHER	28-0003	12	60	SHEAVE	10-0007	1
21	BOLT	27-0069	4	61	BUSHING	9-0017	1
22	BRACKET	56-0054	1	62	BOLT	27-0015	4
23	ISOLATOR	14-0008	2	63	EDGING (FOUR FEET REQUIRED)	33-0020	1
24	KNOB	7-0269	1	64	DECAL - MADE IN USA	34-3553	1
25	LOCKWASHER	29-0110	1	65	DECAL - STRIPE	N/A	1
26	BOLT	31-0048	1	66	DECAL - LOGO	N/A	1
27	HANDLE	7-0182	1	67	BELTGUARD FRONT	6-0179	1
28	GROMMET	33-0001	5	68	BOLT	27-8898	2
29	NOZZLE	18-0397	1	69	BUSHING	9-0005	1
-	NOZZLE	18-0399	1	70	SHEAVE	10-0159	1
-	NOZZLE	18-0400	1	71	DECAL - BELTGUARD IN PLACE (SEE 71-1065)	N/A	1
-	NOZZLE	18-0401	1	72	PUMP KEY	43-0091	1
30	BOLT	27-0576	1	73	DECAL - PUMP	N/A	1
31	TIGHTENER BRACKET	21-0294	1	74	NIPPLE	24-0010	1
32	DECAL - WARNING/CAUTION/OPERATION (SEE 71-1065)	N/A	1	75	PLUG	23-0238	1
33	DECAL	N/A	1	76	LOCKNUT	30-0159	4
34	BASEPLATE	5-0299	1	77	KEY	43-0078	1
35	BOLT	27-8462	4	78	ENGINE - HONDA	1-0086	1
36	TIGHTENER BRACKET	21-0295	1	-	ENGINE - KOHLER	1-0208	1
37	ISOLATION PLATE	5-0298	1	79	DECAL - RISK OF FIRE (SEE 71-1065)	N/A	1
38	BOLT	27-0066	2	80	DECAL - RISK OF BURNS (SEE 71-1065)	N/A	1
39	DECAL- SILVER STICKER	N/A	1	-	DECAL SET	71-1065	1
40	WASHER	28-0005	4	*MUST ORDER IN ONE FOOT LENGTHS			

PUMP ASSEMBLY (3-0308)



PUMP ASSEMBLY

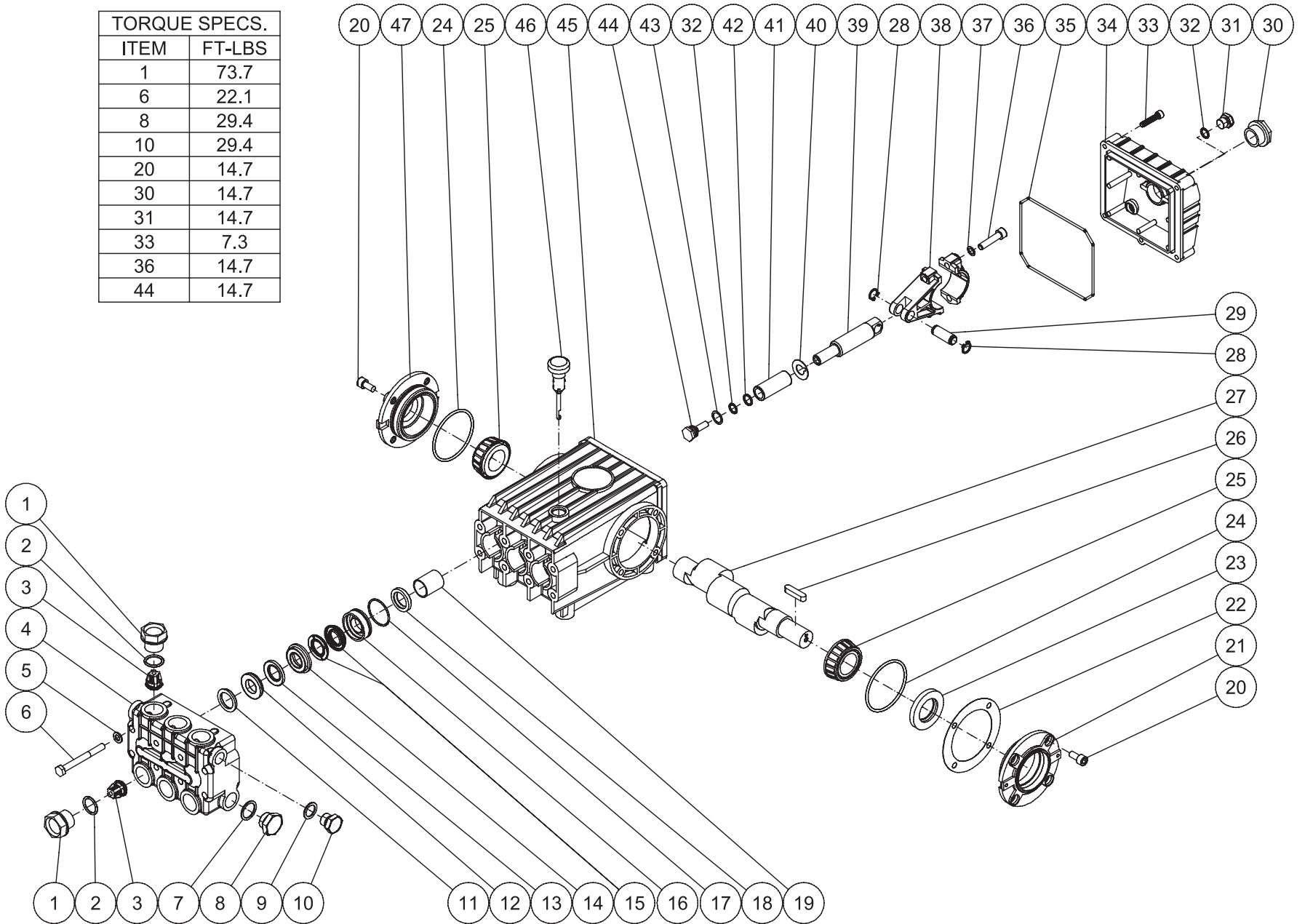
ITEM	DESCRIPTION	PART #	QTY	ITEM	DESCRIPTION	PART #	QTY
1	BOLT	27-8884	8	24	WASHER/GASKET (SEE KIT 70-0352)	26-0191	3
2	SHAFT COVER	46-0691	1	25	NUT (SEE KIT 70-0352)	30-6020	3
3	OIL SEAL (SEE KIT 70-0321)	26-0188	1	26	OIL DIPSTICK	39-0090	1
4	O-RING (SEE KIT 70-0321)	25-0380	2	27	CRANKCASE	46-1198	1
5	ROLLER BEARING	48-0061	1	28	BEARING	48-0072	1
6	CRANKSHAFT	46-1103	1	29	SHIM	46-0705	1
7	PUMP KEY	43-0091	1	30	SHIM	46-0704	1
8	PLUG	39-0086	1	31	BEARING CAP/SUPPORT	46-0703	1
9	O-RING	25-0325	1	32	VALVE CAP	39-0095	6
10	BOLT	27-8885	6	33	O-RING	25-0160	6
11	CRANKCASE COVER	46-0719	1	34	VALVE ASSEMBLY (SEE KIT 70-0319)	46-0937	6
12	O-RING	25-0370	1	35	O-RING (SEE KIT 70-0319)	25-0386	6
13	OIL SIGHT GLASS	46-0670	1	35	O-RING	25-0386	6
14	OIL REFLECTOR	46-0824	1	36	LOCKWASHER	29-0154	8
15	SPRING RETAINER	46-0671	1	37	BOLT	27-8440	8
16	O-RING (SEE KIT 70-0321)	25-0398	1	38	MANIFOLD	46-1186	1
17	CONNECTING ROD	46-0896	3	39	SUPPROT RING (SEE KIT 70-0178)	46-0710	3
18	PISTON PIN	46-0698	3	40	V PACKING (SEE KIT 70-0177)	46-0709	3
19	PLUNGER ROD	46-0699	3	41	PACKING RETAINER	46-0708	3
20	SLINGER WASHER (SEE KIT 70-0352)	46-0700	3	42	LOW PRESSURE SEAL (SEE KIT 70-0177)	46-0707	3
21	O-RING (SEE KIT 70-0352)	25-0404	3	43	O-RING (SEE KIT 70-0177)	25-0384	3
22	O-RING (SEE KIT 70-0352)	25-0415	3	44	OIL SEAL (SEE KIT 70-0321)	46-0931	3
23	PISTON (SEE KIT 70-0352)	46-0701	3				

REPLACEMENT KITS

KIT #	DESCRIPTION	ITEMS	# OF ASSEMBLIES	# OF CYLINDERS
70-0321	KIT - OIL SEALS	3, 4, 16, 44	1, 1, 1, 3	3
70-0352	KIT - PISTONS	20-25	3	3
70-0177	KIT - HIGH PRESSURE SEALS	40, 42, 43	3	3
70-0178	KIT - SUPPORT RINGS	39	3	3
70-0319	KIT - VALVES	34, 35	6	3

PUMP ASSEMBLY (3-0203)

TORQUE SPECS.	
ITEM	FT-LBS
1	73.7
6	22.1
8	29.4
10	29.4
20	14.7
30	14.7
31	14.7
33	7.3
36	14.7
44	14.7

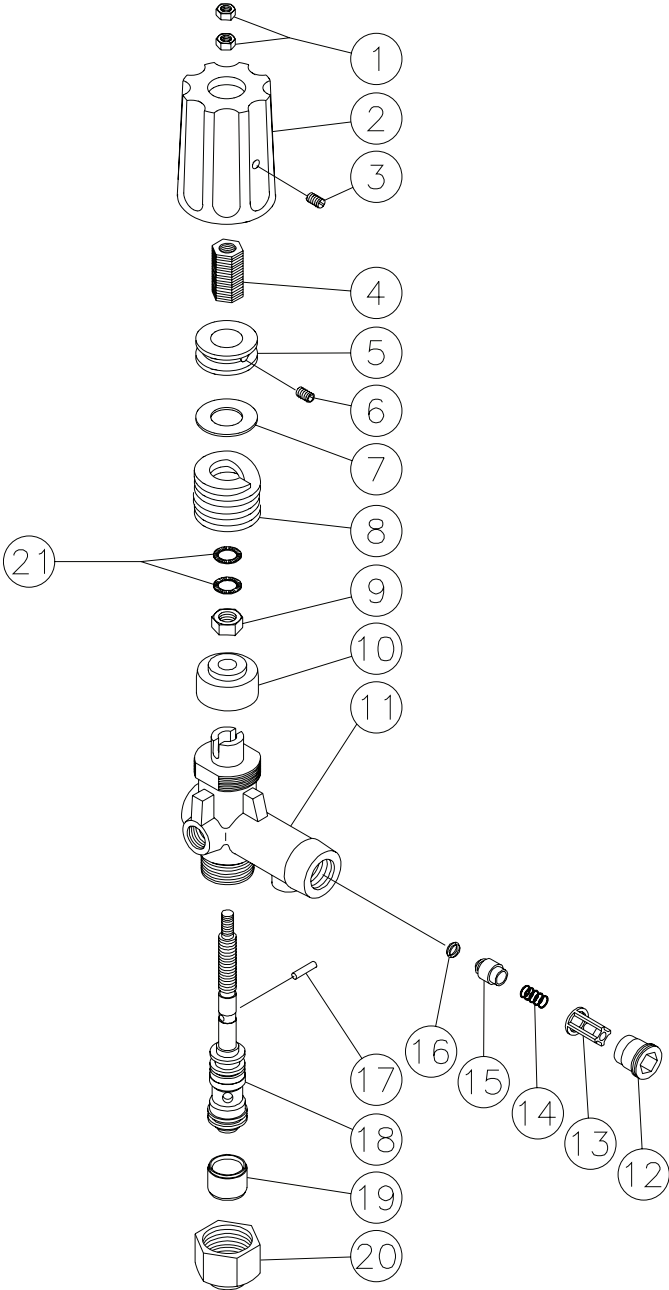


3-0202_3-0203 042914

PUMP ASSEMBLY								
ITEM	DESCRIPTION	PART #	QTY	ITEM	DESCRIPTION	PART #	QTY	
1	VALVE CAP	46-0889	6	25	BEARING	48-0012	2	
2	O-RING	25-0012	6	26	KEY	43-0048	1	
3	VALVE (SEE KIT 70-0009)	22-0056	6	27	CRANKSHAFT	46-0050	1	
4	MANIFOLD	46-0890	1	28	RETAINING RING	46-0103	6	
5	WASHER	28-1039	8	29	CONNECTING ROD PIN	43-0032	3	
6	BOLT	27-8185	8	30	OIL LEVEL INDICATOR	46-0114	1	
7	WASHER	28-1038	2	31	PLUG	39-0017	1	
8	PLUG	39-0019	2	32	O-RING	25-0014	4	
9	WASHER	28-1002	2	33	BOLT	27-8404	5	
10	PLUG	39-0018	2	34	CRANKCASE OPEN COVER	46-0295	1	
11	HEAD RING (SEE KIT 70-0030 AND 852-0122)	70-0030	3	35	O-RING	25-0339	1	
12	V-PACKING SUPPORT (SEE KIT 70-0147 AND 852-0122)	26-0098	3	36	BOLT	27-8435	6	
13	O-RING (SEE KIT 70-0147 AND 70-0148 AND 852-0122)	25-0207	3	37	LOCKWASHER	29-0154	6	
14	HIGH PRESSURE INTERMEDIATE SEAL RETAINER (SEE KIT 70-0148)	46-0659	3	38	CONNECTING ROD	46-0051	3	
15	PRESSURE SEAL (SEE KIT 70-0147 AND 852-0122)	26-0197	3	39	PISTON ROD	46-0056	3	
16	LOW PRESSURE SEAL RETAINER	46-0057	3	40	SLINGER WASHER	46-0146	3	
17	O-RING (SEE KIT 852-0122)	25-0015	3	41	PLUNGER	46-0052	3	
18	OIL SEAL	26-0047	3	42	BACK-UP RING	46-0109	3	
19	BUSHING	9-0029	3	43	WASHER	28-0400	3	
20	BOLT	27-8431	8	44	NUT / PISTON	46-0069	3	
21	CRANKCASE COVER	46-0296	1	45	CRANKCASE	46-0047	1	
22	SHIM	46-0113	1	46	OIL DIP STICK	46-0144	1	
23	OIL SEAL	26-0049	1	47	CRANKCASE COVER	46-0336	1	
24	O-RING	25-0013	2					

REPLACEMENT KITS				
KIT#	DESCRIPTION	ITEMS	# OF ASSEMBLIES	# OF CYLINDERS
70-0009	VALVES	3	6	3
70-0030	HEAD RING	11	3	3
70-0147	V-PACKING	12, 13, 15	3	3
70-0148	INTERMEDIATE RETAINER	13, 14	3	3
852-0122	V-PACKING ASSY	11-13, 15, 17	3	3

UNLOADER ASSEMBLY (8-0361)



UNLOADER (850-0252)			
REF. #	DESCRIPTION	PART #	QTY.
1	Hex Nut	8-0362	2
2	Cover	7-0098	1
3	Set Screw	27-4280	1
4	Adjusting Insert- Brass	8-0363	1
5	Adjustment Nut	8-0364	1
6	Set Screw	8-0365	1
7	Glide Ring	8-0366	1
8	Spring	49-0104	1
9	Hex Nut	8-0367	1
10	Bushing	8-0368	1
11	Unloader Body	8-0369	1
12	Retainer	8-0269	1
13	Valve Housing	8-0104	1
14	Spring	49-0023	1
15	Valve	8-0105	1
16	O-ring	25-0036	1
17	Cylinder Pin	8-0372	1
18	Piston Repair Kit	70-0243	1
19	Spacer	8-0371	1
20	Stop Nut	8-0157	1
21	Washer	29-0154	2
	Check Valve Repair Kit (Includes 13-16)	70-0244	
	Unloader Complete	850-0252	

