



PARTS LIST FOR
CAW-4004-OME1
COLD WATER WALL MOUNT PRESSURE WASHER

Motor Horsepower:	10.0 H.P.
Pump Oil Grade:	SAE30W Non-Detergent
Pump Oil Capacity:	40.6 oz.
Nozzle Size:	4.0

This Parts Listing has been compiled for your benefit. You can be assured your new Cold Water Pressure Washer was constructed and designed with quality and performance in mind using over 25 years experience in the pressure washer business. Each component has been rigorously tested to insure the highest level of acceptance.

The contents of this Parts Listing are based on the latest product information available at the time of publication. The manufacturer reserves the right to make changes in price, color, materials, equipment, specifications or models at any time without notice.

WARNING

THIS IS A PROFESSIONAL HIGH PRESSURE, COLD WATER PRESSURE WASHER. CAUTION SHOULD BE OBSERVED WHEN USING OR REPAIRING THIS UNIT! READ AND FOLLOW THE SAFETY WARNINGS LISTED BELOW BEFORE ATTEMPTING ANY REPAIRS ON THIS PRESSURE WASHER!

SAFETY WARNINGS

1. NEVER alter or modify the equipment. Be sure any accessory items and system components being used will withstand the pressure developed. Use only genuine manufactured parts for repair of your pressure washer. Failure to do so can cause hazardous operating conditions and will VOID warranty.
2. Know how to stop and bleed pressures quickly. Be thoroughly familiar with controls.
3. Before servicing the unit, turn unit off, relieve the water pressure and allow the unit to cool down. Do not make repairs while the unit is running. Service in a clean, dry, flat area. Block the wheels to prevent the unit from moving. Be especially careful to properly dispose of any flammable materials.
4. After testing the machine, DO NOT leave the pressurized unit unattended. Shut off the unit and release trapped pressure before leaving.

Table of Contents

SPECIFICATIONS.....3

FRAME ASSEMBLY4

ELECTRIC BOX ASSEMBLY6

PUMP ASSEMBLY (3-0442)8

UNLOADER ASSEMBLY (8-0633)10

WIRING SCHEMATIC12

WIRING DIAGRAM13

WIRING SCHEMATIC - AUTO START/STOP14

WIRING DIAGRAM - AUTO START/STOP15

WIRING SCHEMATIC - REMOTE BOXES.....16

WIRING DIAGRAM - REMOTE BOXES.....17

WIRING SCHEMATIC - MULTI REMOTE BOX.....18

WIRING DIAGRAM - MULTI REMOTE BOX.....19

WIRING SCHEMATIC - AUTO START/STOP, REMOTE BOX.....20

WIRING DIAGRAM - AUTO START/STOP, REMOTE BOX.....21

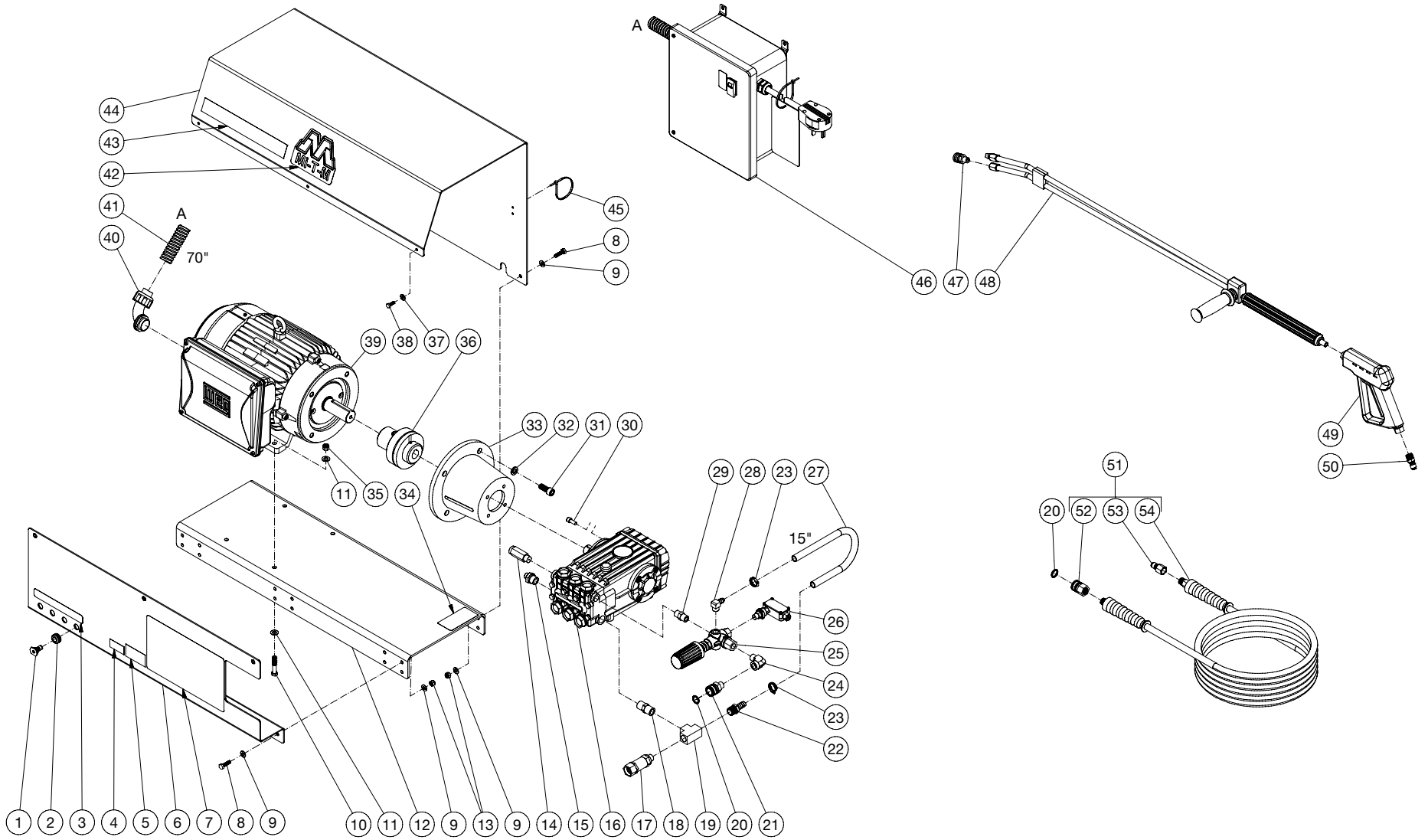
WIRING SCHEMATIC - AUTO START/STOP, MULTI REMOTE BOX.....22

WIRING DIAGRAM - AUTO START/STOP, MULTI REMOTE BOX.....23

SPECIFICATIONS

MODEL	CAW-4004-0ME1
Operating Pressure (PSI/Bar):	4000/275.8
High Pressure Nozzle:	4
Water Volume (GPM/lpm):	4.0/15.2
Motor:	Totally enclosed fan cooled, 4ft. power supply cord without Ground Fault Circuit Interruption (GFCI)
Horsepower	10.0
Voltage	230
Phase	Single
Amps	40.8
Pump:	Direct Driven, Oil Bath, Triplex Piston
Oil Type	SAE30W Non-Detergent
Oil Capacity	40.6/1.2
Plungers	Ceramic
Manifold	Forged Brass
Valves	Stainless Steel
Unloader	Adjustable
Thermal Relief Valve	Relieves heated water during unloader bypass stage
Detergent Injector	Adjustable low pressure down stream from pump
Unit Net Weight (lbs/Kg)	280/127
Unit Shipping Weight (lbs/Kg)	355/161
Unit Net Dimensions (in/cm)	34.0L X 18.0W X 19.0H/86.36L X 45.72W X 48.26H
Unit Shipping Dimensions (in/cm)	49.0L X 31.0W X 36.0H/124.46L X 78.74W X 91.44H

FRAME ASSEMBLY



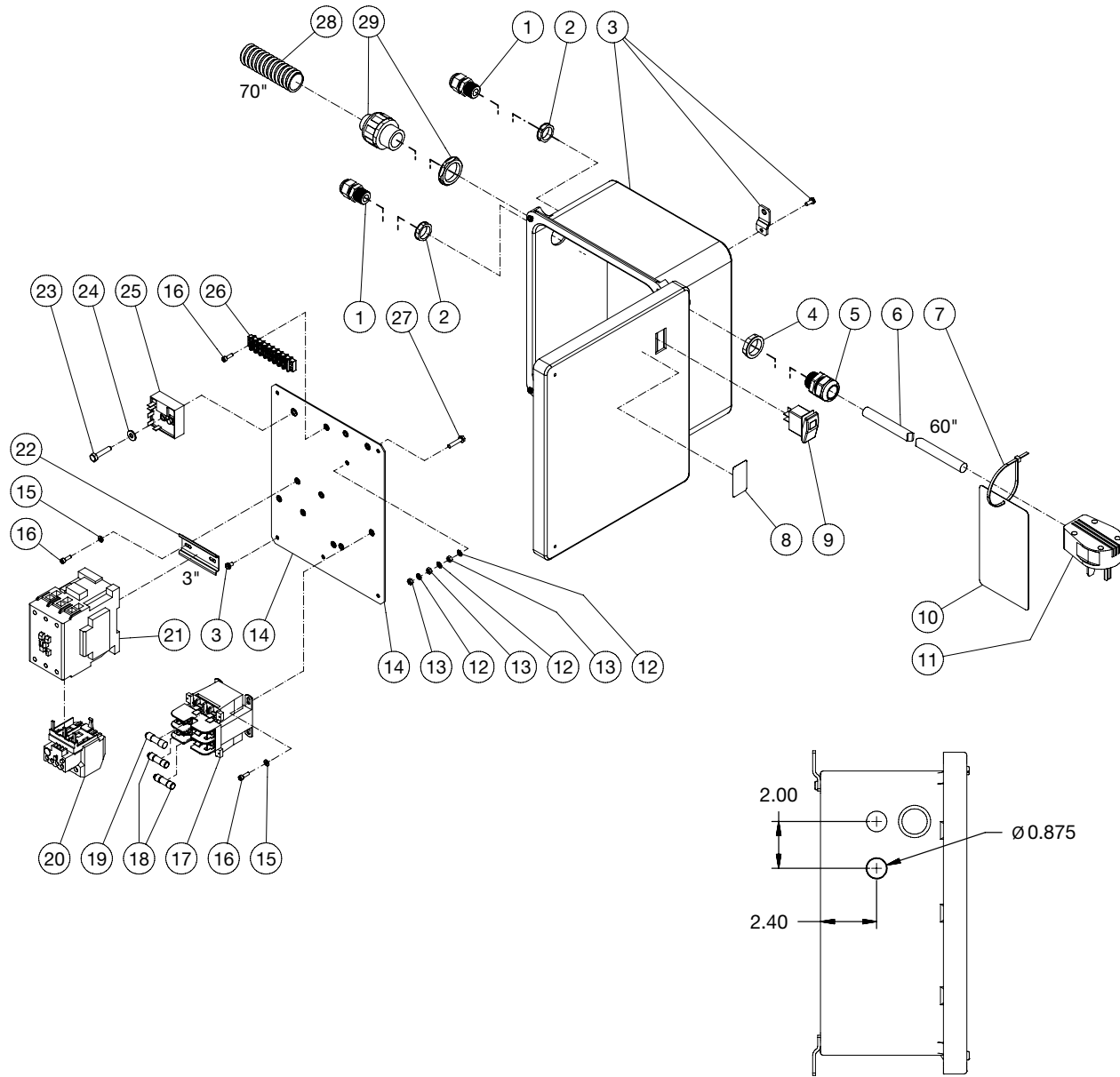
CAW-4004-OME1 101719 JJR

FRAME ASSEMBLY

ITEM	TITLE	PART#	QTY	ITEM	TITLE	PART#	QTY
1	NOZZLE	18-0397	1	27	HOSE *(TWO FEET REQUIRED)	15-0007	1
-	NOZZLE	18-0399	1	28	ELBOW	23-0050	1
-	NOZZLE	18-0400	1	29	NIPPLE	24-0010	1
-	NOZZLE	18-0401	1	30	SCREW	27-8432	4
2	GROMMET	33-0001	4	31	BOLT	27-0879	4
3	DECAL - NOZZLE (SEE 71-1069)	N/A	1	32	LOCKWASHER	29-0010	4
4	DECAL - MADE IN USA	34-3553	1	33	FLANGE	38-0072	1
5	DECAL- MOBILE PRO	34-3850	1	34	DECAL- SILVER STICKER	N/A	1
6	ACCESS PANEL	56-0091	1	35	LOCKNUT	30-0159	4
7	DECAL - WARNING (SEE 71-1069)	N/A	1	36	COUPLER	38-0073	1
8	BOLT	27-0068	8	37	WASHER	28-0002	3
9	WASHER	28-0003	16	38	BOLT	27-0015	3
10	BOLT	27-0121	4	39	MOTOR	2-0202	1
11	WASHER	28-0004	8	40	CONDUIT ELBOW	32-0907	1
12	BASEPLATE	5-0383	1	41	CONDUIT FLEX *(SIX FEET REQUIRED)	32-0908	1
13	LOCKNUT	30-0157	8	42	DECAL - Mi-T-M	N/A	1
14	VALVE	22-0319	1	43	DECAL - STRIPE	N/A	1
15	RELIEF VALVE	22-0371	1	44	HOOD	56-0098	1
16	PUMP	3-0442	1	45	CABLE TIE	33-0022	3
17	FILTER	19-0206	1	46	ELECT BOX ASSY	N/A	1
18	NIPPLE	23-0012	1	47	QC SOCKET	17-0028	1
19	TEE	23-0043	1	48	DUAL LANCE	16-0417	1
20	O-RING	25-0123	2	49	GUN	16-0001	1
21	QUICK CONNECT SOCKET	17-0007	1	50	QUICK CONNECT	17-0074	1
22	BARB	23-0045	1	51	HOSE ASSEMBLY	851-0338	1
23	HOSE CLAMP	42-0011	2	52	QC SOCKET	17-0004	1
24	ELBOW	24-0105	1	53	QUICK CONNECT	17-0006	1
25	UNLOADER	8-0633	1	54	HOSE	15-0209	1
26	PRESSURE SWITCH	22-0171	1	-	DECAL SET	71-1069	1

*MUST ORDER IN ONE FOOT LENGTHS

ELECTRIC BOX ASSEMBLY

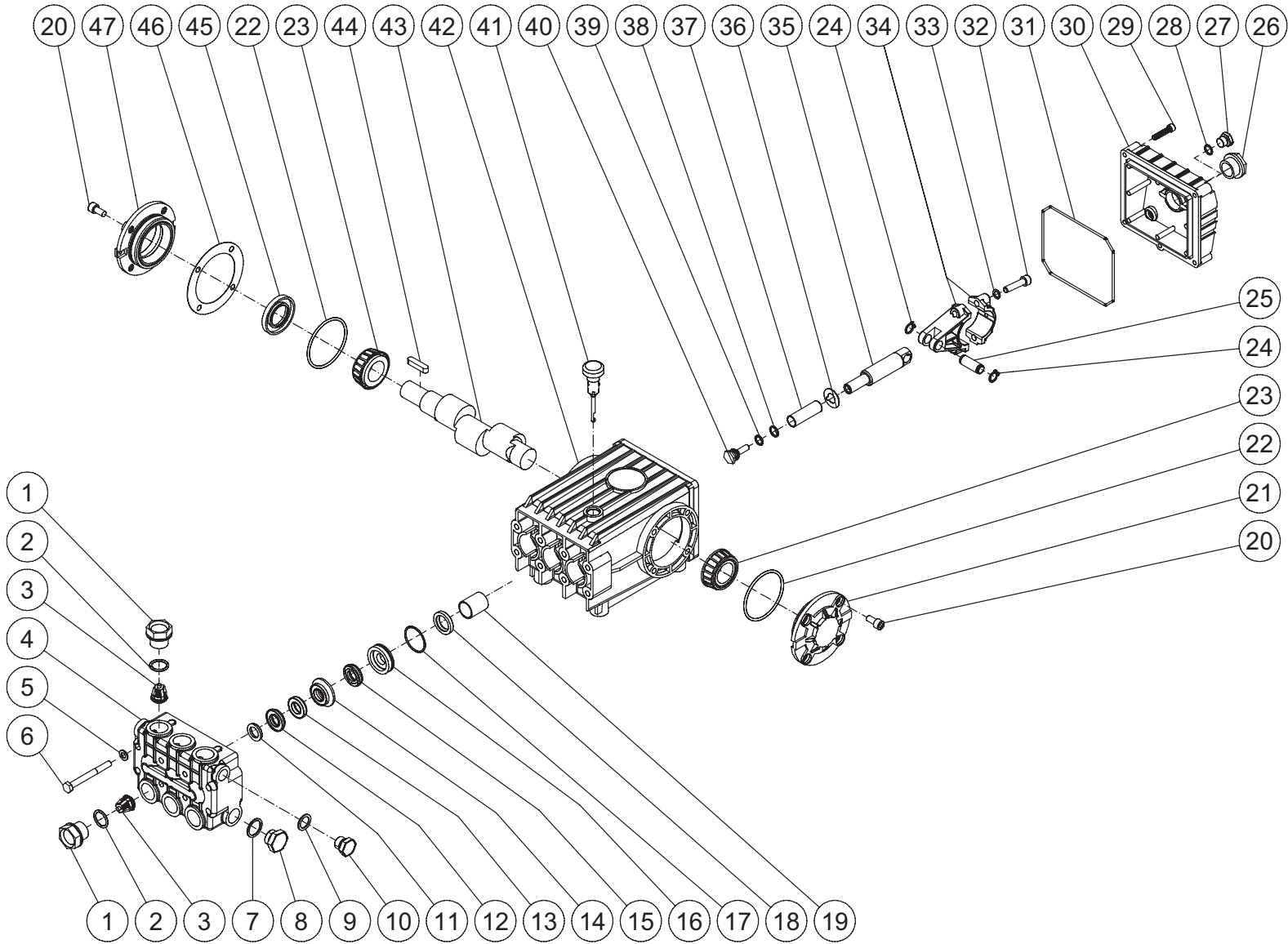


GC 1PHE-BOX ASSY 10HP 102819 JJR

GC 1PH E-BOX ASSY 10HP 102819 JJR			
ELECTRIC BOX			
ITEM	DESCRIPTION	PART #	QTY
1	STRAIN RELIEF	32-0437	2
2	ELECTRICAL LOCKNUT	32-0108	2
3	ELECTRIC BOX	32-1267	1
4	ELECTRICAL LOCKNUT	32-0292	1
5	CORD RELIEF	9-0046	1
6	CORD *(SIX FEET REQUIRED	32-0021	1
7	CABLE TIE	33-0022	1
8	DECAL - ON/OFF (SEE 71-1069)	N/A	1
9	ROCKER SWITCH	32-0731	1
10	TAG - WARNING RISK OF ELECTROCUTION	34-1035	1
11	PLUG	32-0012	1
12	STAR WASHER	28-1009	3
13	NUT	30-6001	3
14	ELECTRIC PLATE	20-0940A06	1
15	WASHER	28-0010	4
16	SCREW	27-8835	6
17	TRANSFORMER	32-0313	1
18	FUSE	32-0467	2
19	FUSE	32-1084	1
20	OVERLOAD	32-0490	1
21	CONTACTOR	32-0598	1
22	DIN RAIL *(ONE FOOT REQUIRED)	32-0316	1
23	BOLT	27-0017	1
24	WASHER	28-0002	1
25	TIMER SWITCH	32-0800	1
26	TERMINAL STRIP	32-0436	1
27	BOLT	27-8807	1
28	CONDUIT FLEX *(SIX FEET REQUIRED)	32-0908	1
29	STRAIGHT CONDUIT FITTING	32-0996	1
*MUST ORDER IN ONE FOOT LENGTHS			

PUMP ASSEMBLY (3-0442)

TORQUE SPECS.	
POSITION	FT-LBS
1	73.7
6	22.1
8	29.4
10	29.4
20	14.7
26	14.7
27	14.7
29	7.3
32	14.7
40	14.7



3-0442 042418 ADR

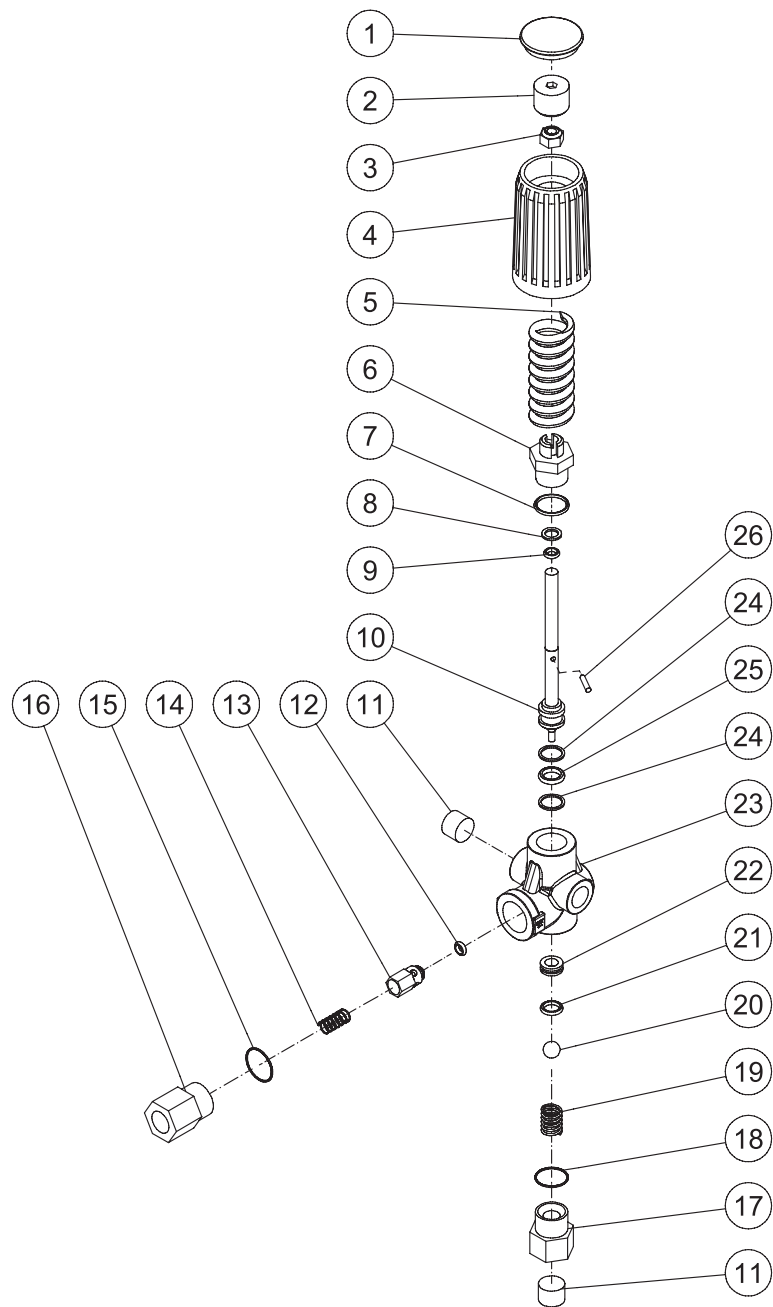
PUMP ASSEMBLY

ITEM	DESCRIPTION	PART #	QTY	ITEM	DESCRIPTION	PART #	QTY
1	CAP VALVE	46-0282	6	25	CONNECTING ROD PIN	43-0032	3
2	O-RING	25-0012	6	26	OIL LEVEL INDICATOR	46-0114	1
3	VALVE (SEE KIT 70-0009)	70-0009	6	27	PLUG	39-0017	1
4	MANIFOLD	46-0291	1	28	O-RING	25-0014	1
5	WASHER	28-1039	8	29	BOLT	27-8404	5
6	BOLT	27-8185	8	30	CRANKCASE OPEN COVER	46-0295	1
7	WASHER	28-1038	2	31	O-RING	25-0339	1
8	PLUG	39-0019	2	32	BOLT	27-8435	6
9	WASHER	28-1002	2	33	LOCKWASHER	29-0154	6
10	PLUG	39-0018	2	34	CONNECTING ROD	46-0051	3
11	HEAD RING (SEE KIT 70-0031 & 852-0064)	SEE KIT	3	35	PISTON GUIDE	46-0294	3
12	PACKING (SEE KIT 70-0042 & 852-0064)	46-0338	3	36	SLINGER WASHER	46-0283	3
13	LONG LIFE RING (SEE KIT 70-0042 & 852-0064)	46-0290	3	37	CERAMIC PLUNGER	46-0337	3
14	INTERMEDIATE RING	70-0210	3	38	RING	25-0137	3
15	V-PACKING (SEE KIT 70-0042 & 852-0064)	46-0287	3	39	O-RING	25-0138	2
16	PACKING RETAINER	46-0286	3	40	PISTON SCREW	46-0285	3
17	O-RING (SEE KIT 852-0064)	25-0015	3	41	OIL DIP STICK	46-0144	1
18	OIL SEAL	26-0047	3	42	CRANKCASE	46-0047	1
19	BUSHING	9-0029	3	43	CRANKSHAFT	46-0050	1
20	BOLT	27-8431	8	44	KEY	43-0048	1
21	CRANKCASE COVER	46-0336	1	45	OIL SEAL	26-0049	1
22	O-RING	25-0013	2	46	SHIM	46-0113	1
23	BEARING	48-0012	2	47	CRANKCASE COVER	46-0296	1
24	RETAINING RING	46-0103	6				

REPLACEMENT KITS

PART KIT #	DESCRIPTION	ITEMS	# OF ASSEMBLIES	# OF CYLINDERS
70-0009	KITS - VALVES	3	6	3
70-0031	KITS - HEAD RING	11	3	3
70-0042	KITS - V-PACKING	12, 13, 15	3	3
70-0210	KITS - INTERMEDIATE RETAINER	14	3	3
852-0064	V-PACKING ASSY	11, 12, 13, 15, 17	3	3

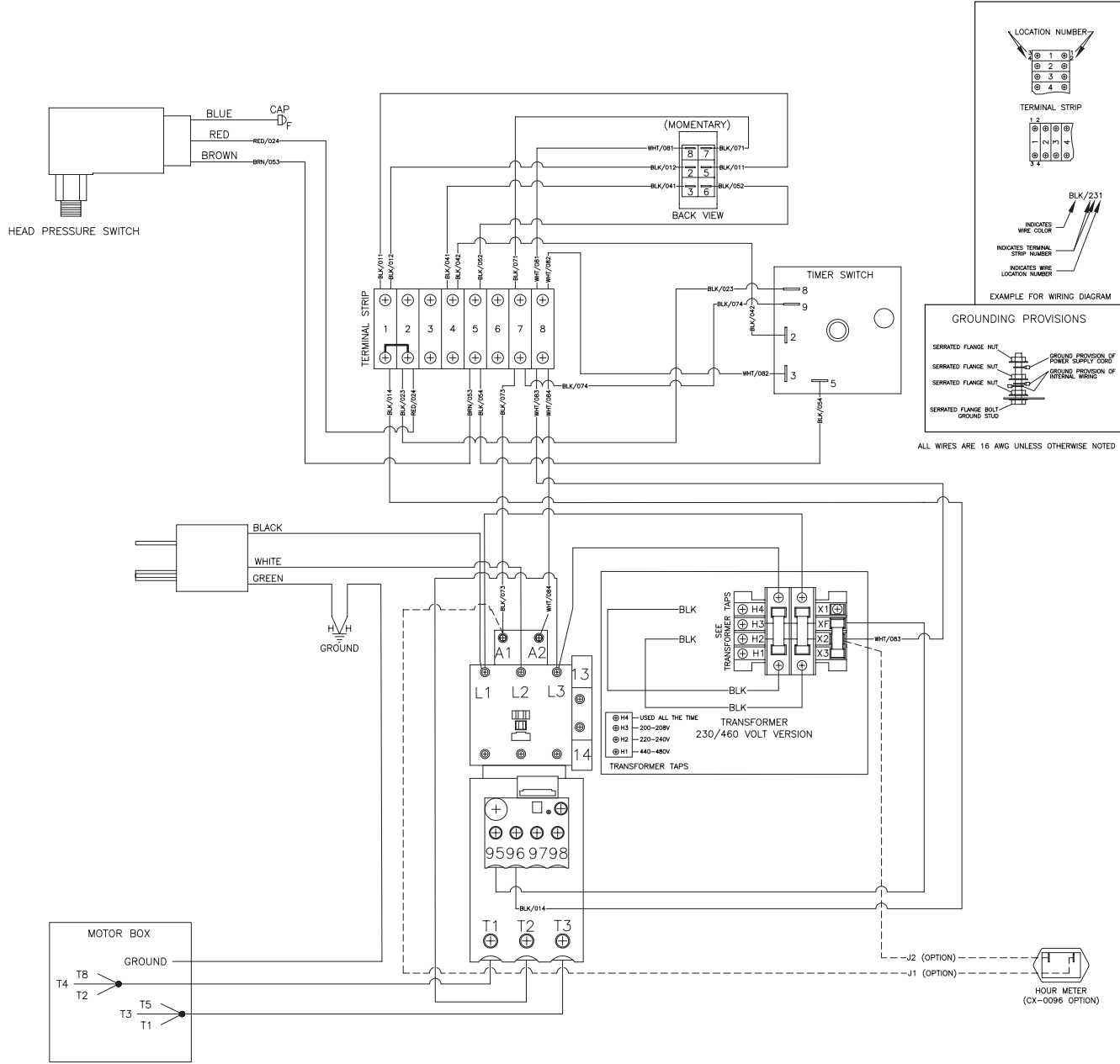
UNLOADER ASSEMBLY (8-0633)



UNLOADER			
ITEM	DESCRIPTION	PART #	QTY
1	CAP	39-0252	1
2	NUT	46-1528	1
3	LOCKNUT	30-3156	1
4	KNOB	7-0242	1
5	SPRING	49-0171	1
6	FITTING	46-1529	1
7	O-RING (SEE KIT 70-0625)	SEE KIT	1
8	O-RING (SEE KIT 70-0625)	SEE KIT	1
9	O-RING (SEE KIT 70-0625)	SEE KIT	1
10	STEM	46-1530	1
11	PLUG	23-0244	2
12	O-RING (SEE KIT 70-0624)	SEE KIT	1
13	POPPET (SEE KIT 70-0624)	SEE KIT	1
14	SPRING (SEE KIT 70-0624)	SEE KIT	1
15	O-RING	25-0672	1
16	OUTLET FITTING	46-1531	1
17	INLET FITTING (SEE KIT 70-0625)	SEE KIT	1
18	O-RING (SEE KIT 70-0625)	SEE KIT	1
19	SPRING	49-0172	1
20	BALL (SEE KIT 70-0625)	SEE KIT	1
21	O-RING (SEE KIT 70-0625)	SEE KIT	1
22	SEAT	46-1532	1
23	FORGING	46-1533	1
24	BACKUP RING (SEE KIT 70-0625)	SEE KIT	2
25	O-RING (SEE KIT 70-0625)	SEE KIT	1
26	PIN (SEE KIT 70-0625)	SEE KIT	1

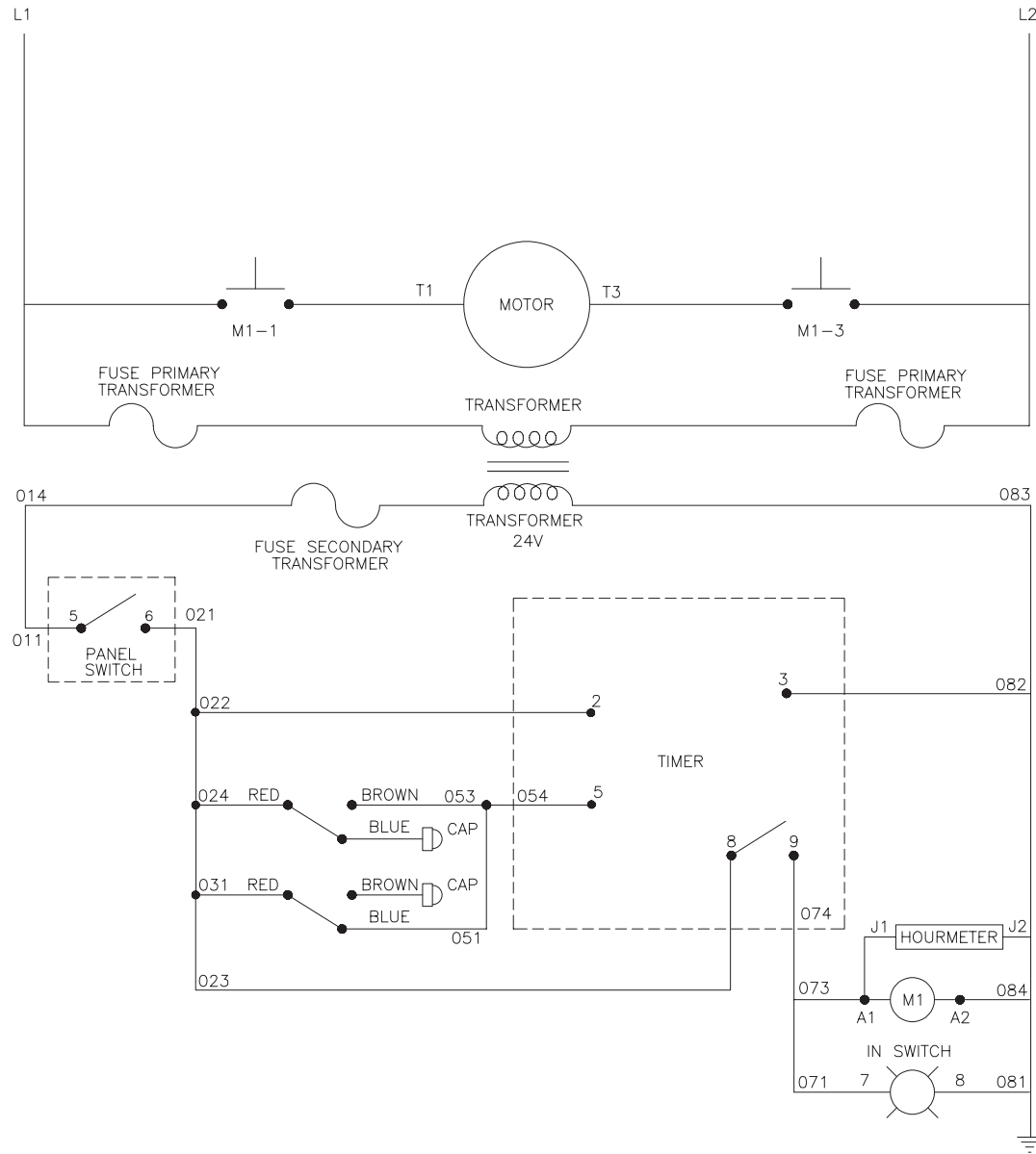
REPLACEMENT KITS			
KIT #	DESCRIPTION	ITEMS	QTY
70-0624	KIT - CHECK VALVE	12-14	1, 1, 1
70-0625	KIT - UNLOADER REBUILD	7-9, 17, 18, 20, 21, 24-26	1, 1, 1, 1, 1, 1, 1, 2, 1, 1

WIRING DIAGRAM

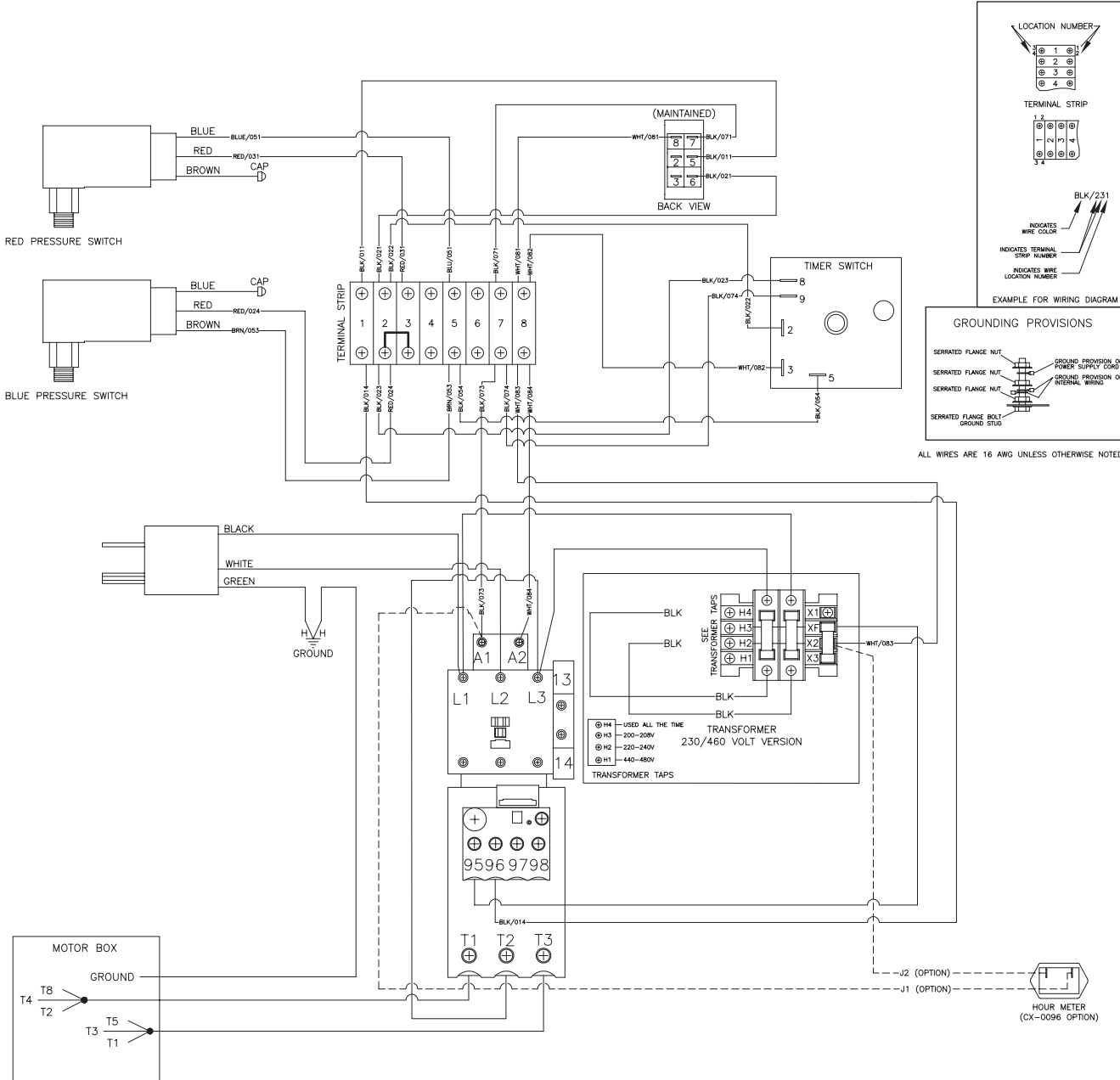


WD - CAW 10HP 1PH (CX-0096) 110419 JJR

WIRING SCHEMATIC - AUTO START/STOP

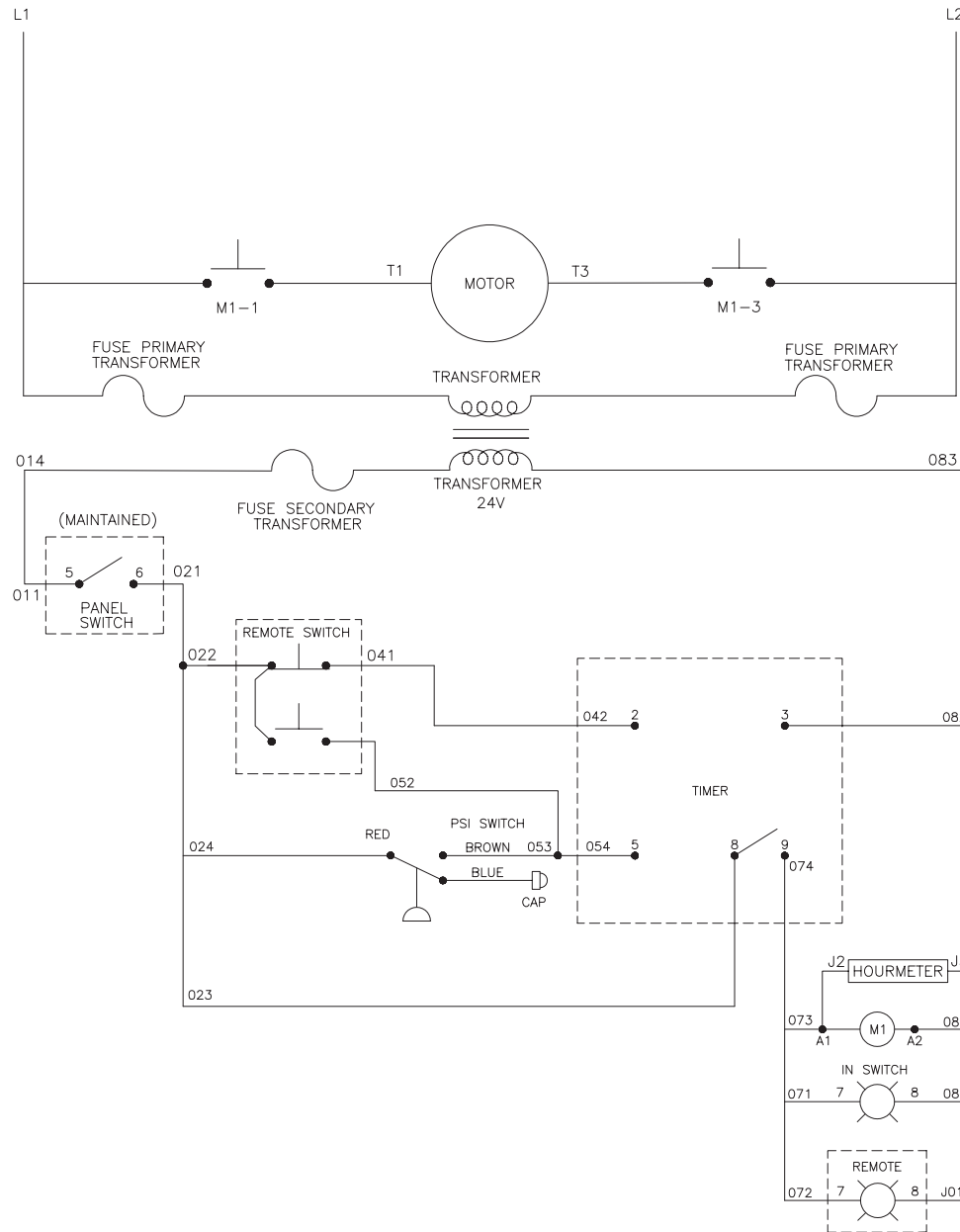


WIRING DIAGRAM - AUTO START/STOP

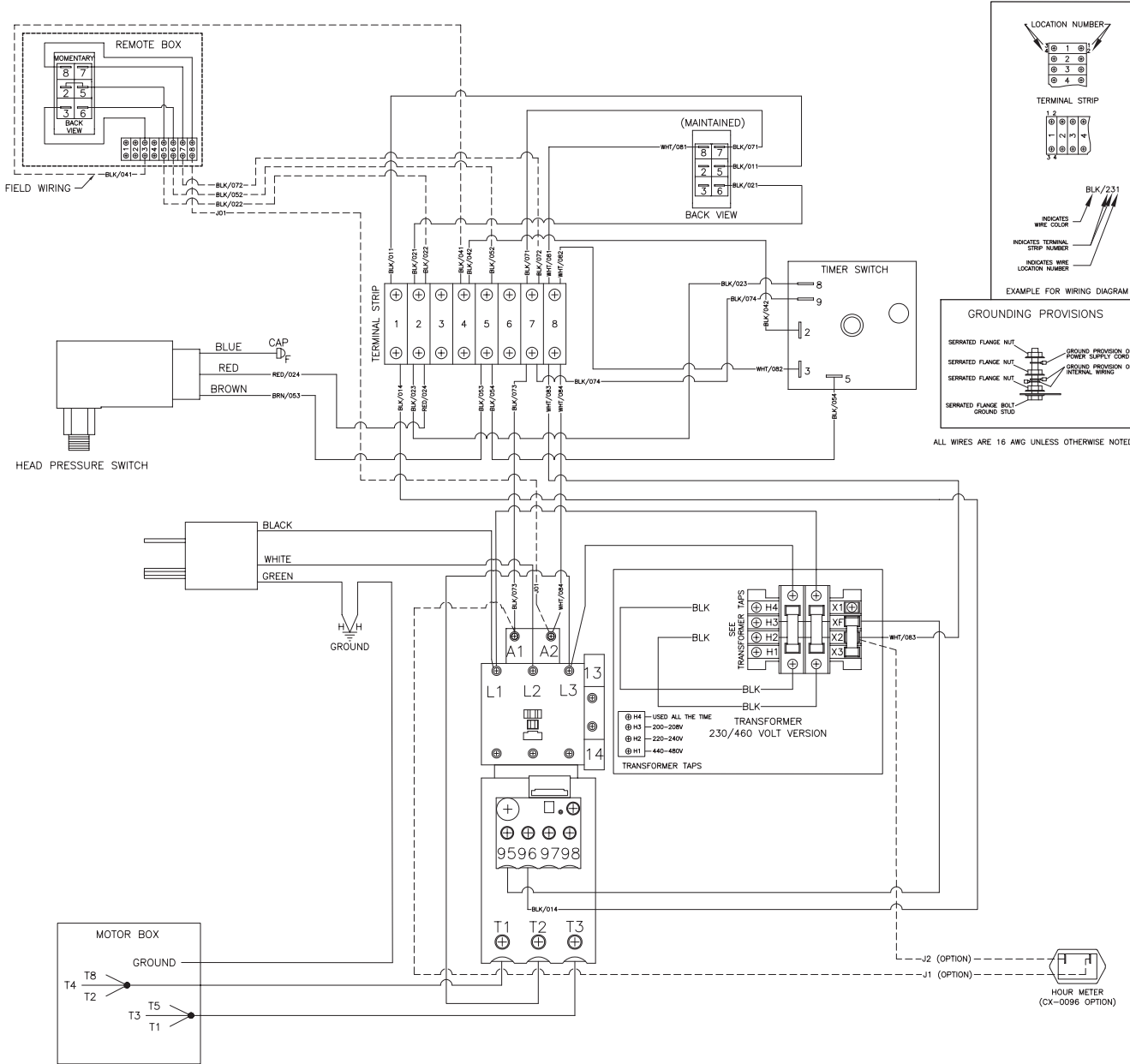


WD - CX-0112 AUTO SS CAW 10HP 1PH (CX-0096) 110419 JJR

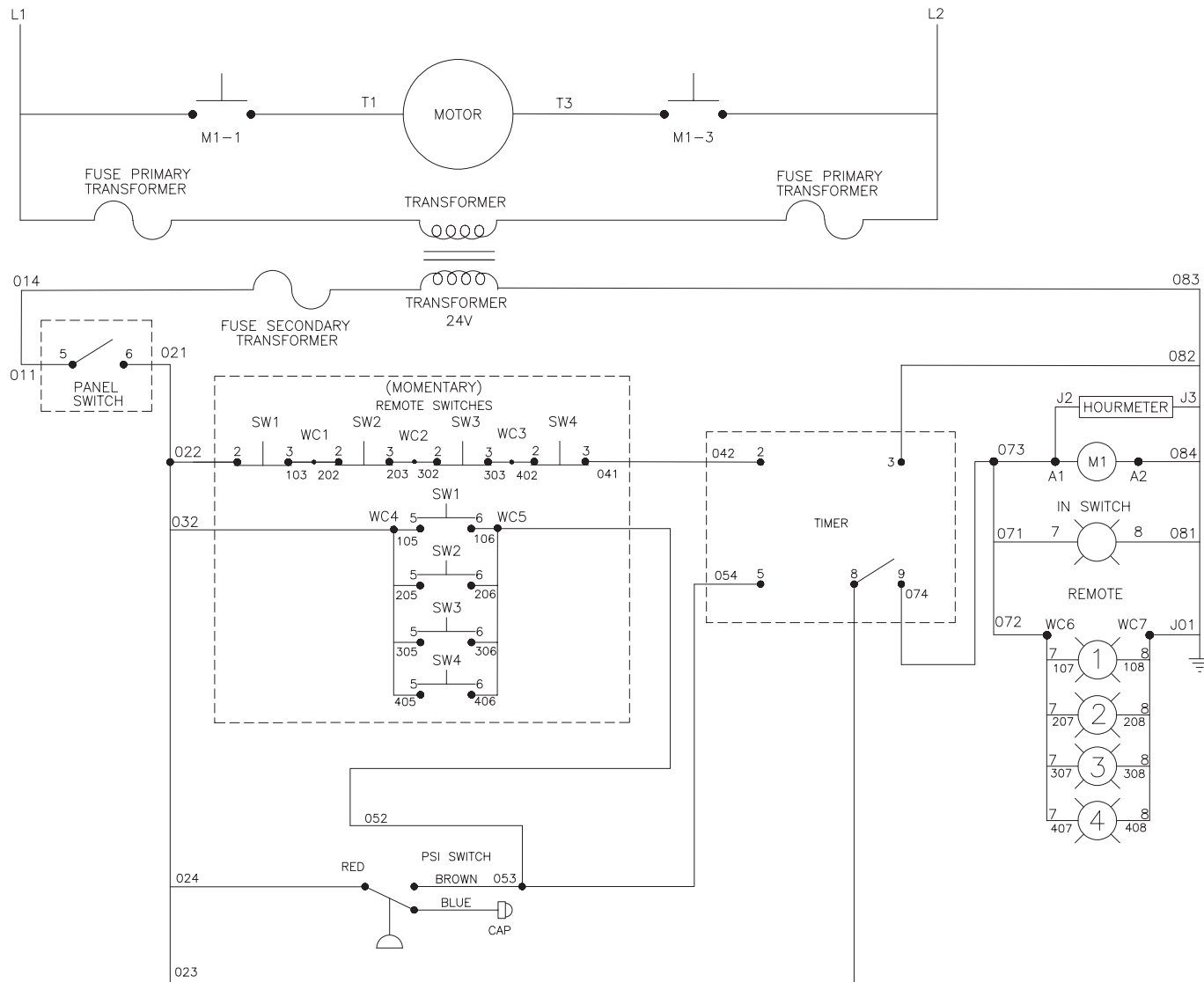
WIRING SCHEMATIC - REMOTE BOXES



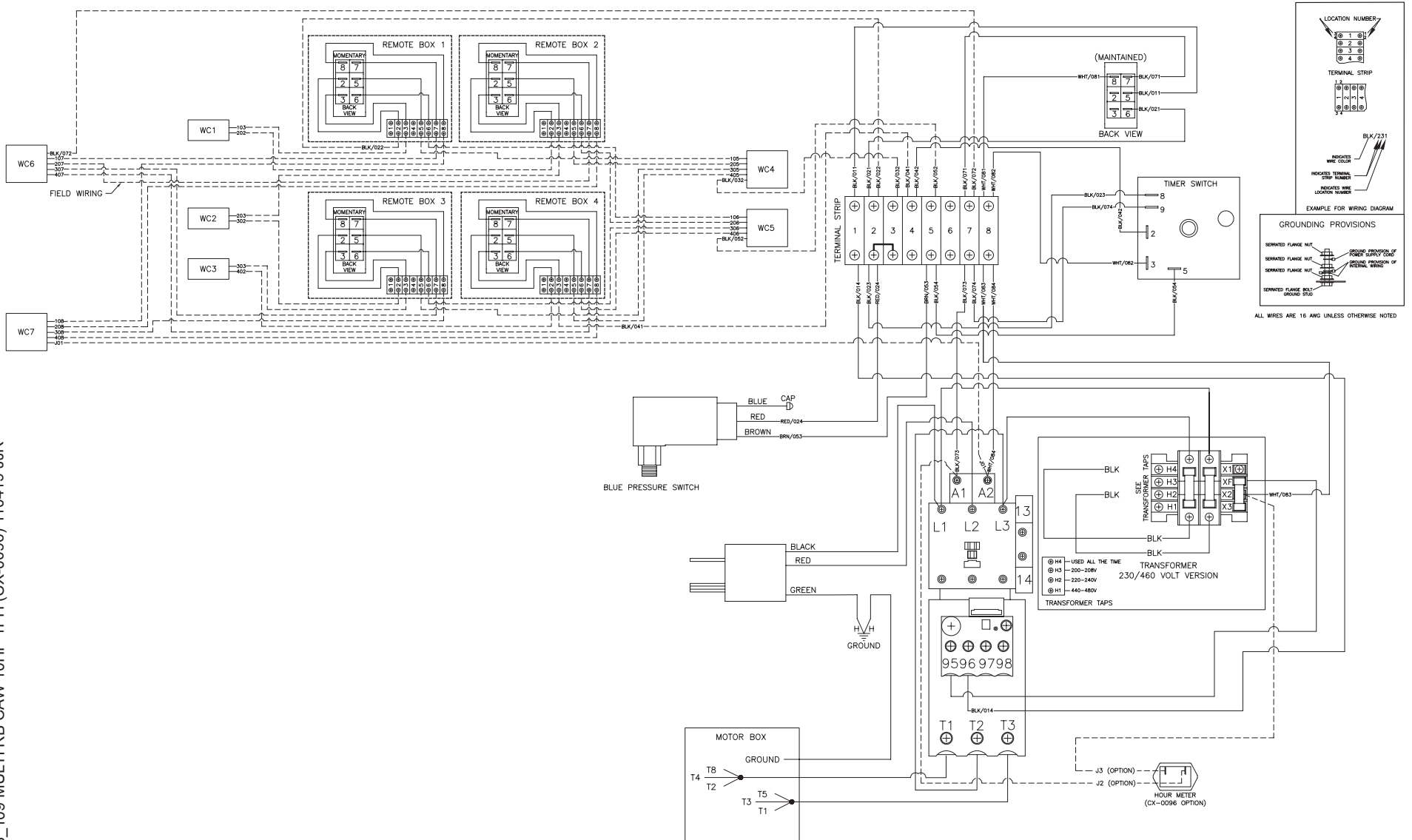
WIRING DIAGRAM - REMOTE BOXES



WIRING SCHEMATIC - MULTI REMOTE BOX

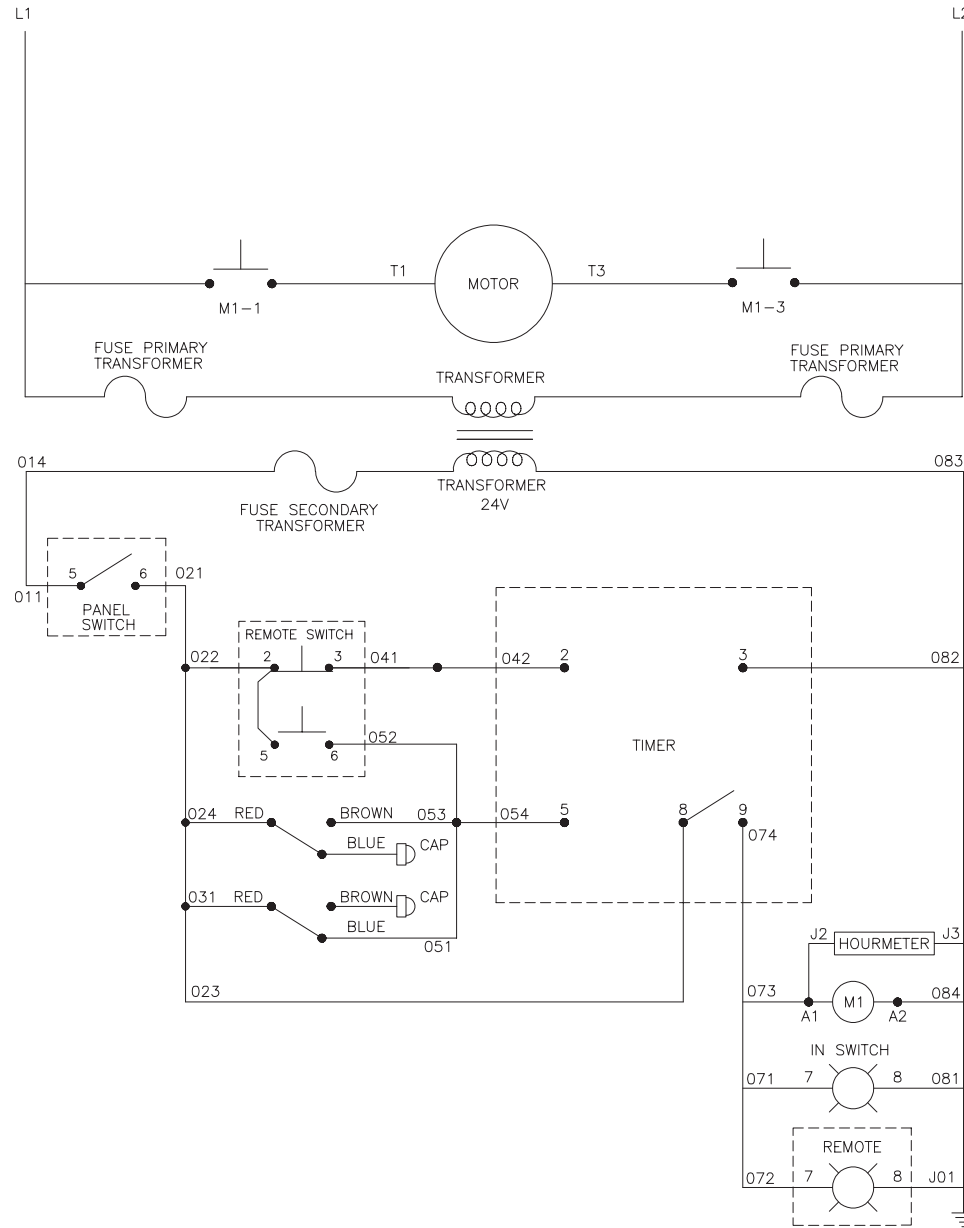


WIRING DIAGRAM - MULTI REMOTE BOX

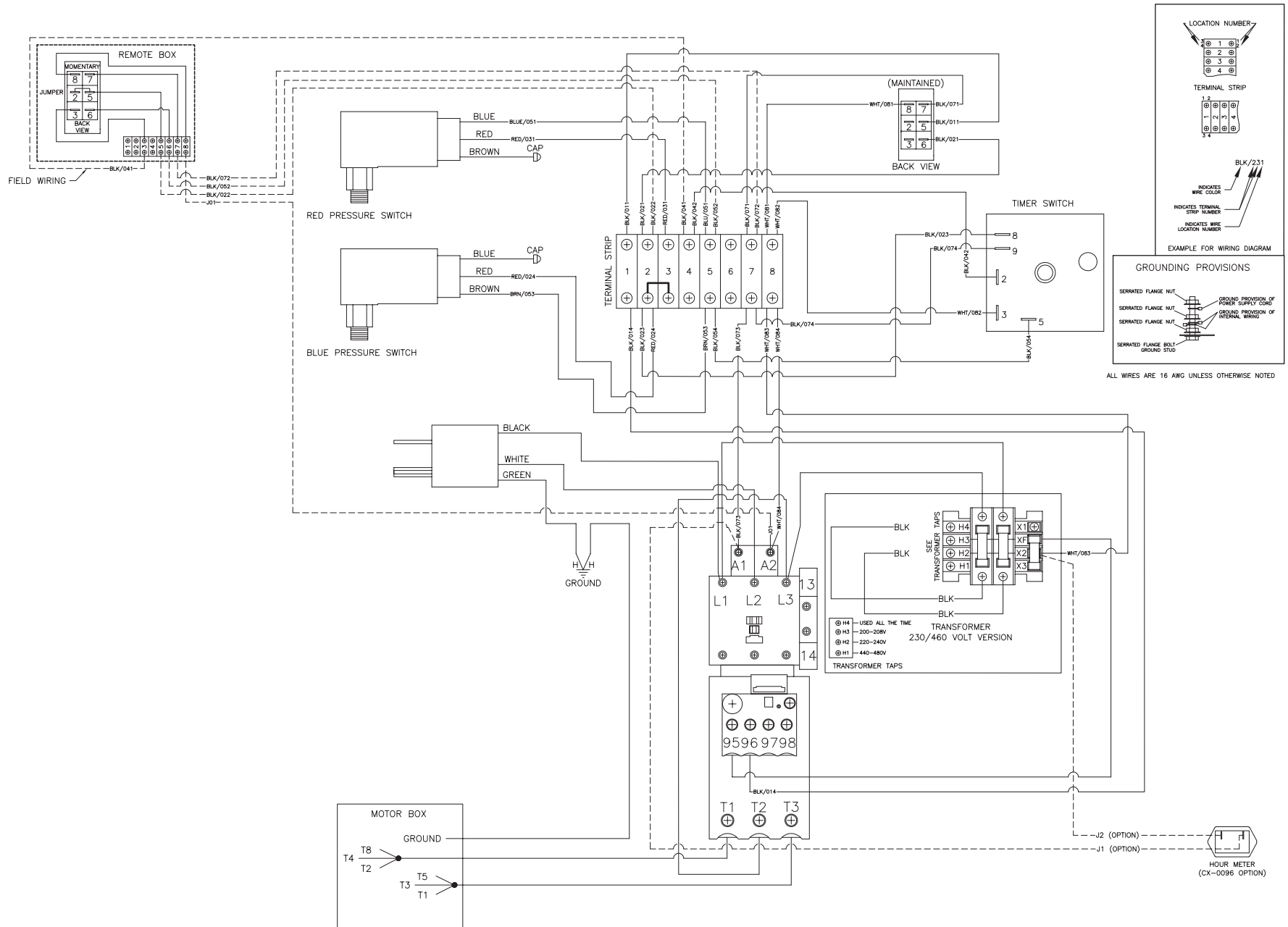


WD - CX-0078_109 MULTI RB CAW 10HP 1PH (CX-0096) 110419 JJR

WIRING SCHEMATIC - AUTO START/STOP, REMOTE BOX

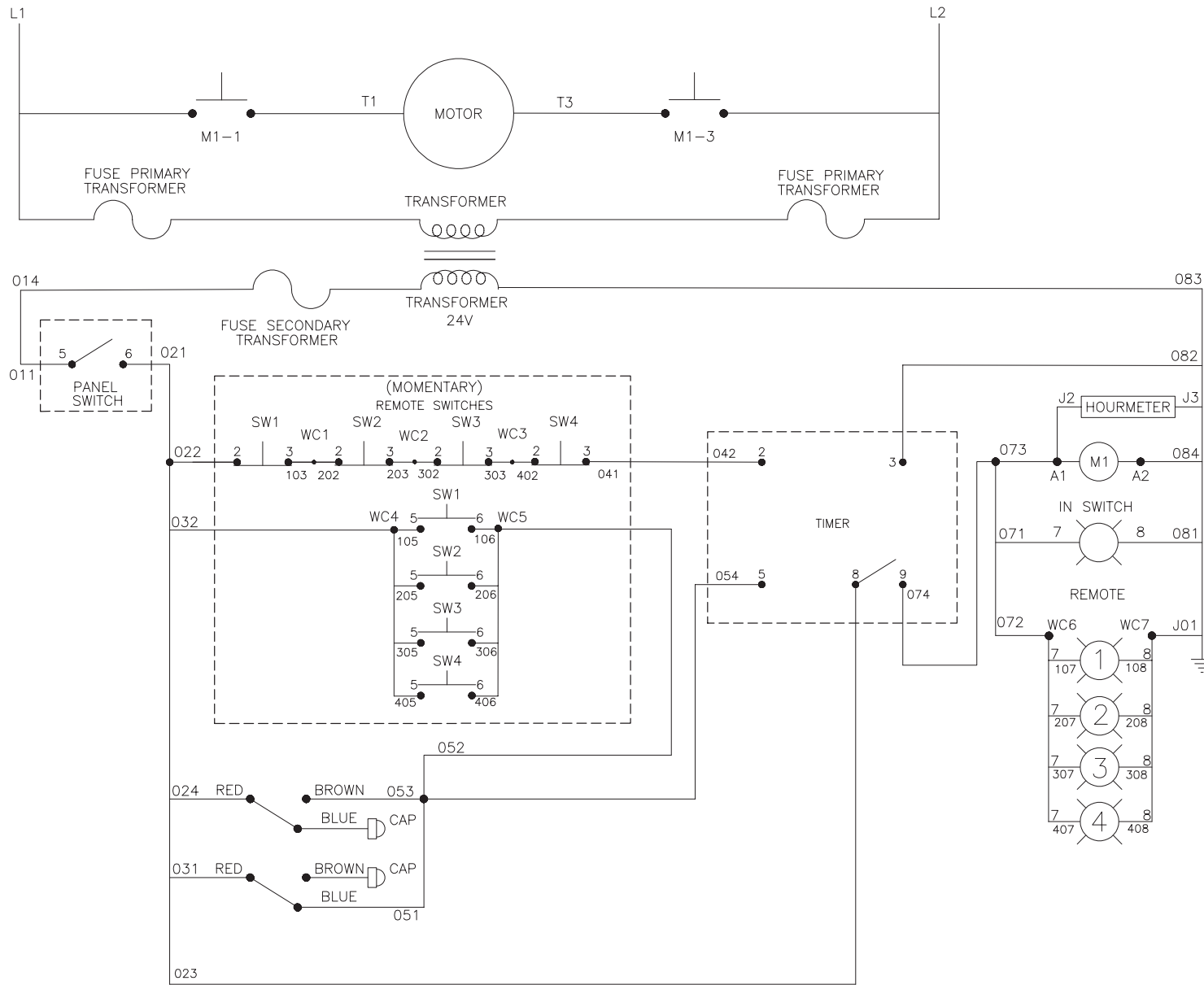


WIRING DIAGRAM - AUTO START/STOP, REMOTE BOX



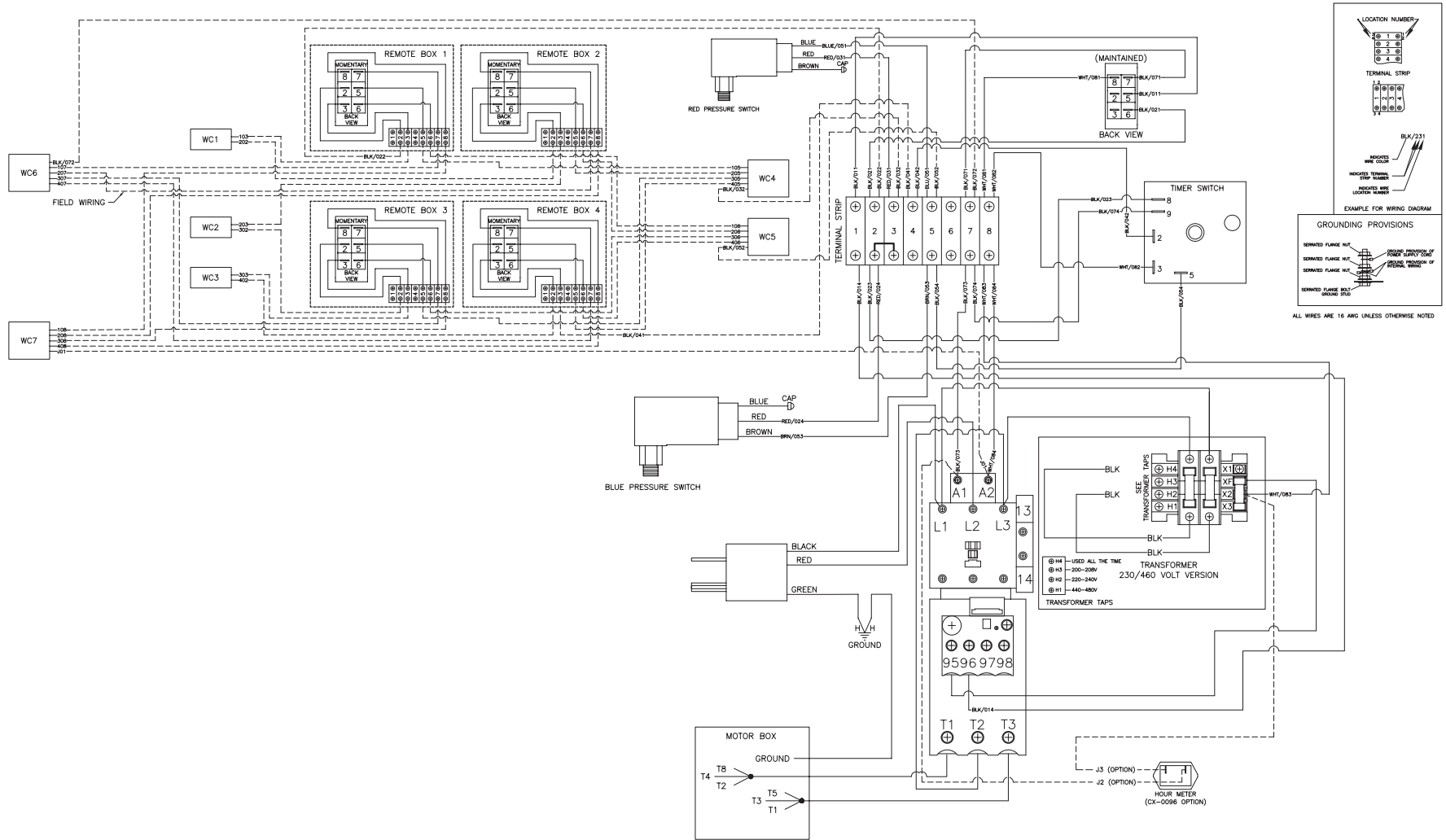
WD - CX-0078_112 AUTO SS, RB CAW 10HP 1PH (CX-0096) 110419

WIRING SCHEMATIC - AUTO START/STOP, MULTI REMOTE BOX



WS - CX-0078_109_112 AUTO SS, MULTI RB CAW 10HP 1PH (CX-0096) 110419 JJR

WIRING DIAGRAM - AUTO START/STOP, MULTI REMOTE BOX



WD - CX-0078_109_112 AUTO SS, MULTI RB CAW 10HP 1PH (CX-0096) 110419 JJR

