



PARTS LIST FOR  
AIR COMPRESSORS  
*15 Hp Industrial Duplex*

This Parts Listing has been compiled for your benefit. You can be assured your Mi-T-M Gasoline Air Compressor was constructed and designed with quality and performance in mind. Each component has been rigorously tested to insure the highest level of acceptance.

The contents of this Parts Listing are based on the latest product information available at the time of publication. Mi-T-M reserves the right to make changes in price, color, materials, equipment, specifications or models at any time without notice.

### WARNING

THIS IS A PROFESSIONAL ELECTRIC AIR COMPRESSOR. CAUTION SHOULD BE OBSERVED WHEN USING OR REPAIRING THIS UNIT! READ AND FOLLOW THE SAFETY WARNINGS LISTED BELOW BEFORE ATTEMPTING ANY REPAIRS ON THIS AIR COMPRESSOR!

### SAFETY WARNINGS

1. NEVER alter or modify the equipment. Be sure any accessory items and system components being used will withstand the pressure developed. Use only genuine Mi-T-M parts for repair of your air compressor. Failure to do so can cause hazardous operating conditions and will VOID warranty.
2. Know how to stop and bleed pressures quickly. Be thoroughly familiar with controls.
3. Before servicing the unit, turn unit off, relieve the pressure and allow the unit to cool down. Do not make repairs while the unit is running. Service in a clean, dry, flat area. Block the wheels to prevent the unit from moving. Be especially careful to properly dispose of any flammable materials.
4. After testing the machine, DO NOT leave the pressurized unit unattended. Shut off the unit and release trapped pressure before leaving.

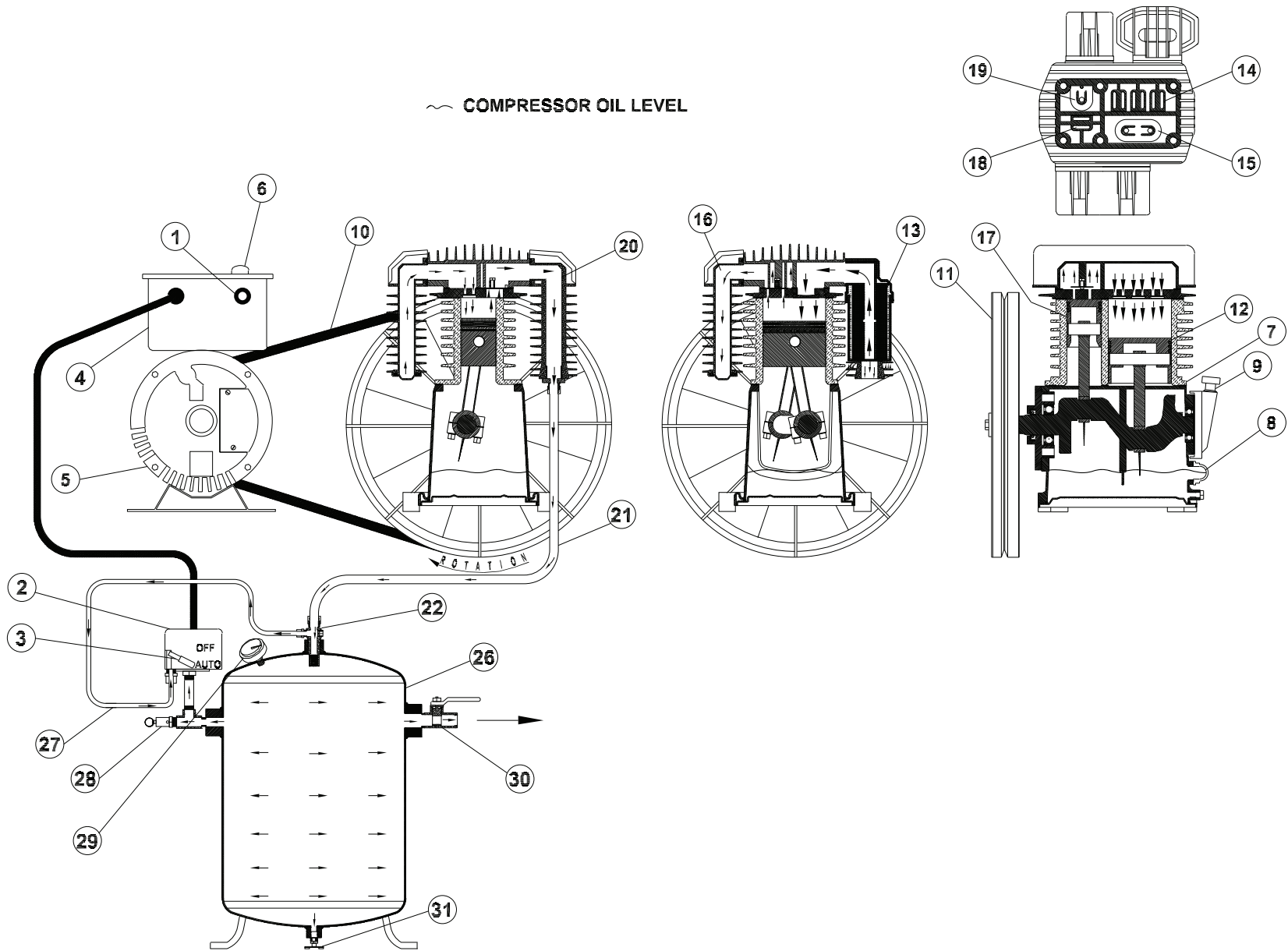
### Table of Contents

<b>SPECIFICATIONS</b> .....	<b>3</b>
<b>FLOW CHART</b> .....	<b>4</b>
<b>GENERAL THEORY OF OPERATION</b> .....	<b>5</b>
<b>AED 120 GALLON DUPLEX SERIES</b> .....	<b>6</b>
<b>AED 120 GALLON DUPLEX M SERIES</b> .....	<b>8</b>
<b>COMPRESSOR PUMP (3-0314)</b> .....	<b>10</b>
<b>LOW OIL SHUTDOWN (IX-0007)</b> .....	<b>12</b>
<b>AFTERCOOLER (IX-0032)</b> .....	<b>13</b>
<b>PNEUMATIC DRAIN OPTION (IX-0035)</b> .....	<b>14</b>
<b>NOTES</b> .....	<b>15</b>
<b>WIRE SCHEMATIC 200/230V 3 PHASE</b> .....	<b>16</b>
<b>WIRE DIAGRAM 200/230V 3 PHASE</b> .....	<b>17</b>
<b>WIRE SCHEMATIC 460V 3 PHASE</b> .....	<b>18</b>
<b>WIRE DIAGRAM 460V 3 PHASE</b> .....	<b>19</b>

## SPECIFICATIONS

MODEL NUMBER	AED-20315/23315/ 46315-120H	AED-20315/23315/ 46315-120HM
<b>MOTOR:</b>		
Horsepower	15HP	
Voltage	200V/230/460V	
Amperage	88.0A/76.0A/38.0A	
HZ	60	
Phase	3	
RPM	1755/1760/1760	
<b>Compressor Pump:</b>		
Number of Cylinders	2	
Compression Stages	2	
First Stage Bore	3.93	
Second Stage Bore	4.72	
Stroke	3.15	
RPM	1050	
Flywheel	16.5"	
Lubrication	Splash	
Oil Capacity	160 oz.	
Oil Type	30 W Non Detergent	
Crankcase	Cast Iron	
Bearings	Ball	
Cylinder	Cast Iron	
Valves	Reed	
Head	Cast Iron	
Filter	Canister	
<b>AIR TANK:</b>		
Capacity	120 gallons	
<b>PERFORMANCE:</b>		
CFM Air Displacement	127.6	
CFM @ 40 PSI	98.8	
CFM @ 100 PSI	96	
CFM @ 175 PSI	93	
Maximum Pressure	175 PSI	
Pump-up Time: 0-175 PSI	-- minutes and -- seconds	
Recovery Time: 145-175 PSI	-- minutes and -- seconds	
<b>WEIGHT:</b>		
Net	1490 lbs	1590 lbs
Shipping	1550 lbs	1650 lbs
<b>DIMENSIONS:</b>		
Basic L x W x H	76" x 26.5" x 58"	
Shipping L x W x H	80.5" x 37.5" x 63"	

# FLOW CHART

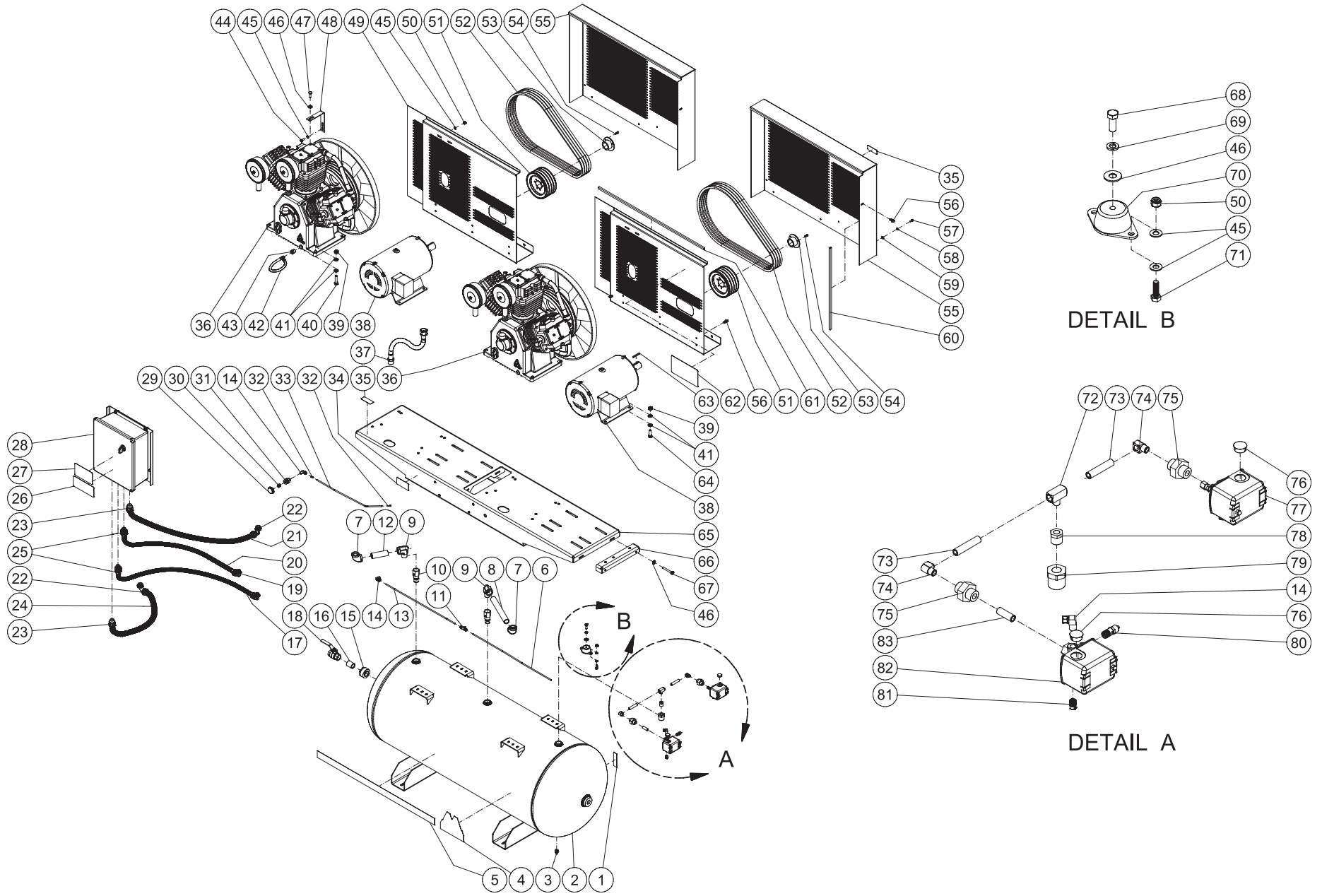


OMAC0061A-021809-RD

## GENERAL THEORY OF OPERATION

1. The POWER SUPPLY (1) sends the electrical supply to the PRESSURE SWITCH (2). When the PRESSURE SWITCH LEVER (3) is in the "AUTO" position, power is supplied to the CONTACTOR (4) which starts the ELECTRIC MOTOR (5) which is protected from electrical overloads by the MANUAL RESET BUTTON (6).
2. The COMPRESSOR PUMP (7) is lubricated by oil. The oil level should be checked before each use by viewing the COMPRESSOR PUMP OIL SIGHTGLASS (8). If the oil level is low, add SAE-30W non-detergent oil to the COMPRESSOR PUMP OIL FILL PORT (9).
3. When the unit is operating, the V-BELT (10) turns the COMPRESSOR PUMP FLYWHEEL (11) which rotates the crankshaft and moves the pistons.
4. As the FIRST STAGE PISTON (12) moves down, air is drawn in through the INLET AIR FILTER (13). Then through the FIRST STAGE INLET REED VALVE (14) and into the first stage piston chamber. At the same time, the FIRST STAGE OUTLET REED VALVE (15) is closed. This allows air to fill the first stage piston chamber.
5. As the FIRST STAGE PISTON (12) moves upward, the FIRST STAGE INLET REED VALVE (14) closes. The FIRST STAGE OUTLET REED VALVE (15) opens allowing the compressed air to flow into the INTERCOOLER (16) and into the second stage.
6. As the SECOND STAGE PISTON (17) moves down, the first stage compressed air is drawn in through the SECOND STAGE INLET REED VALVES (18) and into the second stage piston chamber. At the same time, the SECOND STAGE OUTLET REED VALVES (19) is closed.
7. As the SECOND STAGE PISTON (17) moves upward, the SECOND STAGE INLET REED VALVES (18) closes. The SECOND STAGE OUTLET REED VALVES (19) opens allowing the compressed air to flow into the AFTERCOOLER (20) and DISCHARGE LINE (21).
8. STANDARD START/STOP FEATURE:
  1. The compressed air opens the CHECK VALVE (22) and moves into the AIR TANK (26). When the pressure in the AIR TANK (26) reaches the maximum pressure setting of the PRESSURE SWITCH (2), the ELECTRIC MOTOR (5) stops and the CHECK VALVE (22) will close.
  2. The pressurized air remaining in the PUMP DISCHARGE LINE (21) exits through the PRESSURE SWITCH BLEND-OFF LINE (27) so the ELECTRIC MOTOR (5) can restart under a no-load condition.
9. The SAFETY RELIEF VALVE (28) protects the system from any overpressure conditions.
10. The TANK PRESSURE GAUGE (29) indicates tank pressure. The air exits through the OUTLET FITTING (30).
11. The PRESSURE SWITCH LEVER (3) stops the ELECTRIC MOTOR (5) when moved to the "OFF" position.
12. When the PRESSURE SWITCH LEVER (3) is in the "OFF" position, compressed air should be released from the AIR TANK (26) by opening the attached air tool or by pulling on the SAFETY RELIEF VALVE (28). When the TANK PRESSURE GAUGE (29) registers less than 10 PSI, drain the condensation from the AIR TANK (26) by opening the TANK DRAIN (31).

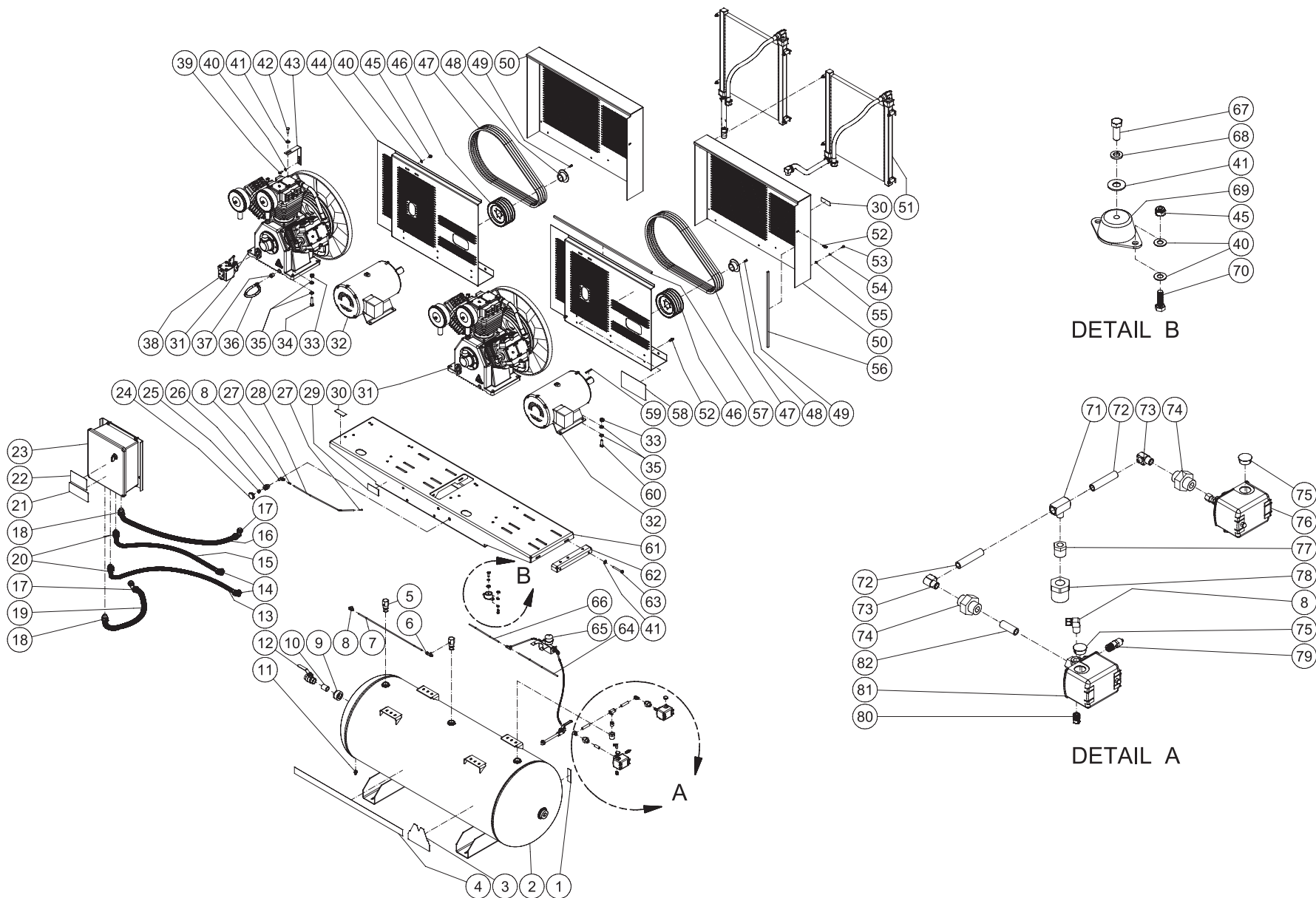
# AED 120 GALLON DUPLEX SERIES



AED-120 GALLON DUPLEX 020909 PJH

AED 120 GALLON DUPLEX							
ITEM	DESCRIPTION	Mi-T-M #	QTY	ITEM	DESCRIPTION	Mi-T-M #	QTY
1	DECAL - TANK DRAIN (SEE 34-9016)	N/A	2	43	REDUCER	24-0053	2
2	TANK ASSEMBLY	12-0201A01	1	44	BOLT	27-0066	4
3	PETCOCK	23-0312	2	45	WASHER	28-0003	24
4	DECAL - Mi-T-M	34-2170	1	46	WASHER	28-0023	12
5	DECAL Mi-T-M STRIPE	34-2282	1	47	BOLT	27-8061	4
6	COPPER TUBING	54-0034	1	48	BELTGUARD STABILIZER	20-1031A01	4
7	ELBOW	24-0096	2	49	BELTGUARD BACK	N/A	2
8	NIPPLE	24-0327	1	50	LOCKNUT	30-0157	12
9	ELBOW	24-0319	2	51	SHEAVE	10-0147	2
10	CHECK VALVE	22-0436	2	52	BELT	11-0081	8
11	TEE	23-0475	1	53	BUSHING	9-0091	2
12	NIPPLE	24-0260	1	54	BOLT	27-0015	6
13	COPPER TUBING *(TWO FEET REQUIRED)	54-0034	1	55	BELTGUARD FRONT	N/A	2
14	ADAPTER	23-0417	3	56	BOLT	27-9524	8
15	REDUCER	24-0233	1	57	BOLT	27-8001	6
16	NIPPLE	24-0200	1	58	LOCKWASHER	29-0006	6
17	CONDUIT *(FOUR FEET REQUIRED)	32-0253	1	59	WASHER	28-0002	6
18	BALL VALVE	22-0344	1	60	EDGING *(TWO FEET REQUIRED)	33-0020	4
19	CONDUIT ELBOW	32-0254	2	61	EDGING *(THREE FEET REQUIRED)	33-0020	2
20	CONDUIT *(THREE FEET REQUIRED)	32-0253	1	62	DECAL - CAUTION/WARNING/DANGER (SEE 34-9016)	N/A	1
21	CONDUIT *(FOUR FEET REQUIRED)	32-0486	1	63	KEY	43-0078	2
22	CONDUIT ELBOW	32-0487	2	64	BOLT	27-0218	8
23	CONDUIT STRAIGHT	32-0488	2	65	BASEPLATE	5-0285A01	1
24	CONDUIT *(TWO FEET REQUIRED)	32-0486	1	66	BELT TENSIONER PLATE	20-1030A01	2
25	CONDUIT FITTING	32-0255	2	67	BOLT	27-0576	4
26	DECAL - OPERATING INSTRUCTIONS (SEE 34-9016)	N/A	1	68	BOLT	27-0117	4
27	DECAL - MAINTENANCE INSTRUCTIONS (SEE 34-9016)	N/A	1	69	LOCKWASHER	29-0008	4
28	CONTROL BOX ASSEMBLY	N/A SEP	1	70	ISOLATOR	14-0109	4
29	PRESSURE GAUGE	22-0271	1	71	BOLT	27-0067	8
30	REDUCER	23-0111	1	72	TEE	23-0015	1
31	BULKHEAD	24-0326	1	73	NIPPLE	24-0314	2
32	TUBE SUPPORT	23-0425	2	74	ELBOW	23-0014	2
33	HOSE *(TWO FEET REQUIRED)	15-0238	1	75	UNION	24-0317	2
34	DECAL- SILVER STICKER	N/A	1	76	PLUG	39-0014	2
35	DECAL - RISK OF BURNS (SEE 34-9016)	N/A	4	77	PRESSURE SWITCH	22-0445	1
36	PUMP	3-0314	2	78	REDUCER	23-0056	1
37	HOSE	15-0282	2	79	REDUCER	23-0226	1
38	MOTOR (AED-20315-120H)	2-0152	2	80	PRESSURE RELIEF VALVE	22-0267	1
-	MOTOR (AED-23315-120H, AED-46315-120H)	2-0153		81	PLUG	24-0009	1
39	NUT	30-0163	16	82	PRESSURE SWITCH	22-0444	1
40	BOLT	27-0220	8	83	NIPPLE	24-0313	1
41	WASHER	28-0006	32	84	DECAL SET	34-0916	1
42	OIL DRAIN HOSE	70-0520	2				

# AED 120 GALLON DUPLEX M SERIES

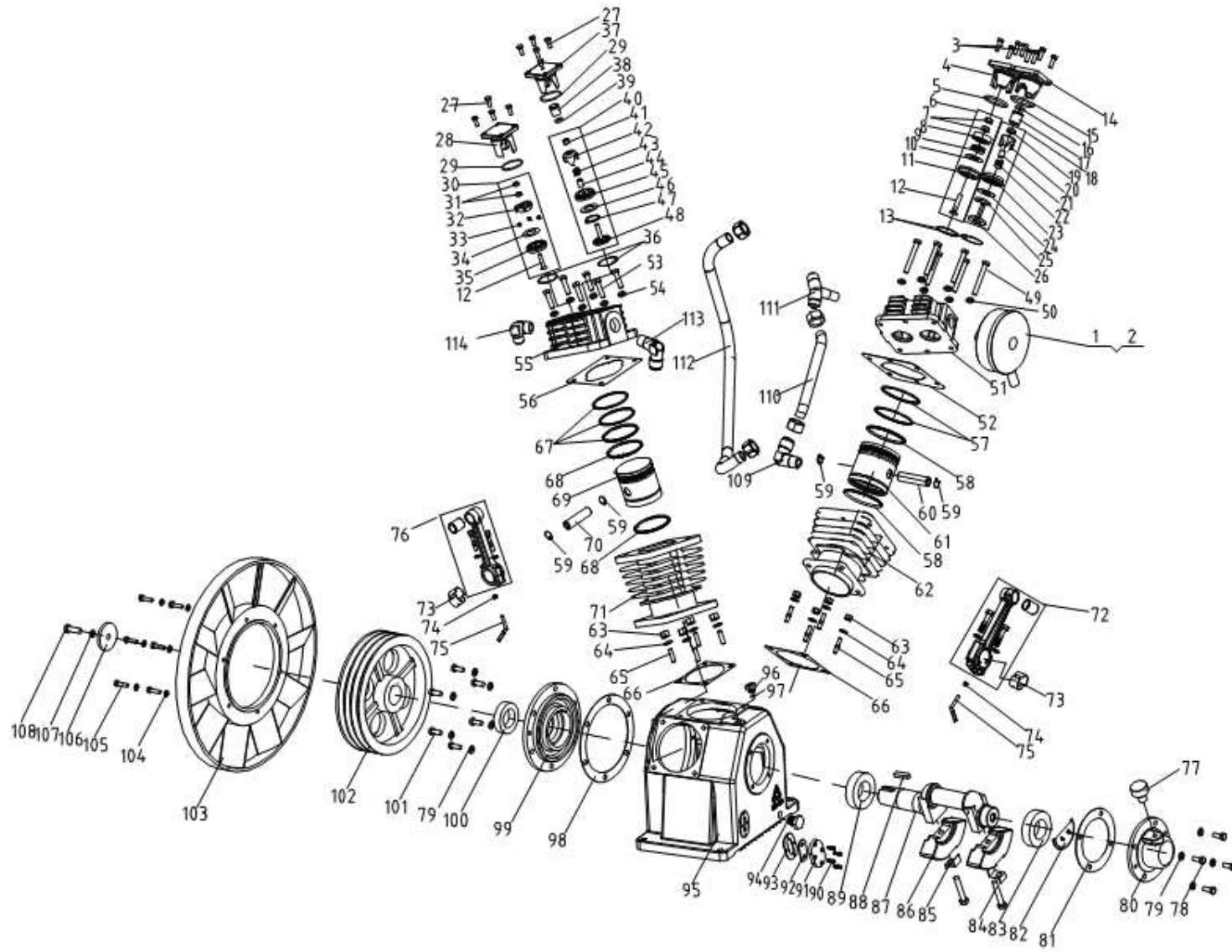


AED-120 GALLON DUPLEX M 020909 PJH



AED 120 GALLON DUPLEX M SERIES								
ITEM	DESCRIPTION	Mi-T-M #	QTY	ITEM	DESCRIPTION	Mi-T-M #	QTY	
1	DECAL - TANK DRAIN (SEE 34-9016)	N/A	2	42	BOLT	27-8061	4	
2	TANK ASSEMBLY	12-0201A01	1	43	BELTGUARD STABILIZER	20-1031A01	4	
3	DECAL - Mi-T-M	34-2170	1	44	BELTGUARD BACK	N/A	2	
4	DECAL Mi-T-M STRIPE	34-2282	1	45	LOCKNUT	30-0157	12	
5	CHECK VALVE	22-0436	2	46	SHEAVE	10-0147	2	
6	TEE	23-0475	1	47	BELT	11-0081	8	
7	COPPER TUBING	54-0034	1	48	BUSHING	9-0091	2	
8	ADAPTER	23-0417	3	49	BOLT	27-0015	6	
9	REDUCER	24-0233	1	50	BELTGUARD FRONT	N/A	2	
10	NIPPLE	24-0200	1	51	AFTERCOOLER OPTION	IX-0035	1	
11	PETCOCK	23-0312	1	52	BOLT	27-9524	8	
12	BALL VALVE	22-0344	1	53	BOLT	27-8001	6	
13	CONDUIT *(FOUR FEET REQUIRED)	32-0253	1	54	LOCKWASHER	29-0006	6	
14	CONDUIT ELBOW	32-0254	2	55	WASHER	28-0002	6	
15	CONDUIT *(THREE FEET REQUIRED)	32-0253	1	56	EDGING *(TWO FEET REQUIRED)	33-0020	4	
16	CONDUIT *(FOUR FEET REQUIRED)	32-0486	1	57	EDGING *(THREE FEET REQUIRED)	33-0020	2	
17	CONDUIT ELBOW	32-0487	2	58	DECAL - CAUTION/WARNING/DANGER (SEE 34-9016)	N/A	1	
18	CONDUIT STRAIGHT	32-0488	2	59	KEY	43-0078	2	
19	CONDUIT *(TWO FEET REQUIRED)	32-0486	1	60	BOLT	27-0218	8	
20	CONDUIT FITTING	32-0255	2	61	BASEPLATE	5-0285A01	1	
21	DECAL - OPERATING INSTRUCTIONS (SEE 34-9016)	N/A	1	62	BELT TENSIONER PLATE	20-1030A01	2	
22	DECAL - MAINTENANCE INSTRUCTIONS (SEE 34-9016)	N/A	1	63	BOLT	27-0576	4	
23	CONTROL BOX ASSEMBLY	N/A SEP	1	64	COPPER TUBING	54-0034	1	
24	PRESSURE GAUGE	22-0271	1	65	TANK DRAIN OPTION	IX-0032	1	
25	REDUCER	23-0111	1	66	COPPER TUBING	54-0034	1	
26	BULKHEAD	24-0326	1	67	BOLT	27-0117	4	
27	TUBE SUPPORT	23-0425	2	68	LOCKWASHER	29-0008	4	
28	HOSE *(TWO FEET REQUIRED)	15-0238	1	69	ISOLATOR	14-0109	4	
29	DECAL- SILVER STICKER	N/A	1	70	BOLT	27-0067	8	
30	DECAL - RISK OF BURNS (SEE 34-9016)	N/A	4	71	TEE	23-0015	1	
31	PUMP	3-0314	2	72	NIPPLE	24-0314	2	
32	MOTOR (AED-20315-120HM)	2-0152	2	73	ELBOW	23-0014	2	
-	MOTOR (AED-23315-120HM, AED-46315-120HM)	2-0153	2	74	UNION	24-0317	2	
33	NUT	30-0163	16	75	PLUG	39-0014	2	
34	BOLT	27-0220	8	76	PRESSURE SWITCH	22-0445	1	
35	WASHER	28-0006	32	77	REDUCER	23-0056	1	
36	OIL DRAIN HOSE	70-0520	2	78	REDUCER	23-0226	1	
37	REDUCER	24-0053	2	79	PRESSURE RELIEF VALVE	22-0267	1	
38	LOW OIL SHUTDOWN OPTION	IX-0007	2	80	PLUG	24-0009	1	
39	BOLT	27-0066	4	81	PRESSURE SWITCH	22-0444	1	
40	WASHER	28-0003	24	82	NIPPLE	24-0313	1	
41	WASHER	28-0023	12	83	DECAL SET	34-0916	1	

# COMPRESSOR PUMP (3-0314)

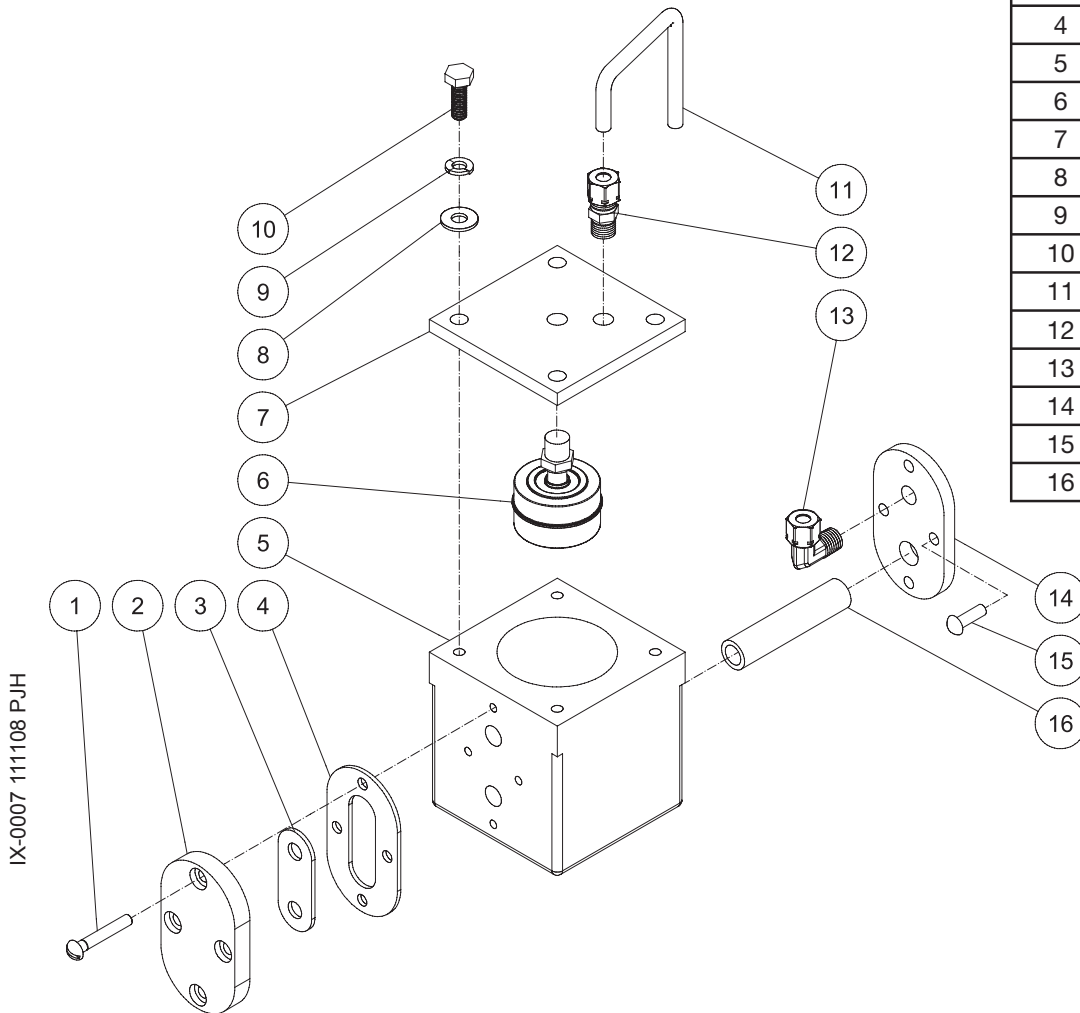


3-3-0314 010714 JDK

PUMP ASSEMBLY							
ITEM	DESCRIPTION	MI-T-M #	QTY	ITEM	DESCRIPTION	MI-T-M #	QTY
1	AIR STRAINER ASSEMBLY	19-0259	2	59	SNAP RING (1ST)	N/A	6
2	AIR STRAINER ELEMENT (NOT SHOWN)	19-0260	2	60	PISTON PIN (1ST)	N/A	2
3	BOLT	N/A	16	61	PISTON (1ST)	N/A	2
4	PUSH COVER (1ST)	N/A	2	62	CYLINDER (1ST)	N/A	2
5	O-RING (OUTLET VALVE-1ST)	25-0614	2	63	NUT	N/A	12
6	OUTLET VALVE ASSEMBLY (1ST)	8-0603	2	64	WASHER	N/A	12
7	NUT (OUTLET VALVE-1ST) (SEE KIT 8-0603)	SEE KIT	4	65	BOLT	N/A	12
8	RECEIVER (1ST) (SEE KIT 8-0603)	SEE KIT	2	66	GASKET (SEE KIT 70-0532)	26-0342	3
9	SPRING (1ST) (SEE KIT 8-0603)	SEE KIT	6	67	COMPRESSION RING (2ND)	N/A	3
10	PLATE (1ST) (SEE KIT 8-0603)	SEE KIT	2	68	OIL CONTROL RING (2ND)	N/A	2
11	SEAT (1ST) (SEE KIT 8-0603)	SEE KIT	2	69	PISTON (2ND)	N/A	1
12	BOLT (1ST) (SEE KIT 8-0603 OR 8-0605)	SEE KIT	3	70	PISTON PIN (2ND)	N/A	1
13	VALVE GASKET (1ST) (SEE KIT 70-0532)	26-0340	4	71	CYLINDER (2ND)	N/A	1
14	PUSH COVER (1ST)	N/A	2	72	CONNECTING ROD ASSEMBLY (1ST)	N/A	2
15	O-RING (OUTLET VALVE-1ST)	25-0614	2	73	PIN (1ST)	N/A	6
16	O-RING (UNLOADER-1ST)	25-0615	2	74	NUT	N/A	3
17	PISTON (1ST)	46-1350	2	75	OIL SPLASH DIPPER	N/A	3
18	INLET VALVE ASSEMBLY-1ST	8-0602	2	76	CONNECTING ROD ASSEMBLY (2ND)	N/A	1
19	LOCKNUT (INLET VALVE-1ST) (SEE KIT 8-0602)	SEE KIT	2	77	BREATHER ASSEMBLY	46-1345	1
20	UNLOADER FORK (1ST) (SEE KIT 8-0602)	SEE KIT	2	78	BOLT	N/A	4
21	UNLOADER FORK GUIDE (1ST) (SEE KIT 8-0602)	SEE KIT	2	79	WASHER	N/A	10
22	SPRING (1ST) (SEE KIT 8-0602)	SEE KIT	2	80	COVER	N/A	1
23	SEAT (1ST) (SEE KIT 8-0602)	SEE KIT	2	81	GASKET (SEE KIT 70-0532)	26-0343	1
24	PLATE (1ST) (SEE KIT 8-0602)	SEE KIT	2	82	OIL BAFFLE	N/A	1
25	SPRING (1ST) (SEE KIT 8-0602)	SEE KIT	2	83	BEARING	N/A	1
26	RECEIVER (1ST) (SEE KIT 8-0602)	SEE KIT	2	84	BOLT	N/A	2
27	PUSH COVER BOLT	N/A	8	85	LOCKWASHER	N/A	2
28	PUSH COVER (2ND)	N/A	1	86	COUNTERWEIGHT	N/A	2
29	O-RING (OUTLET VALVE-2ND)	25-0608	2	87	CRANKSHAFT	N/A	1
30	OUTLET VALVE ASSEMBLY (2ND) (SEE KIT 8-0605)	8-0605	1	88	PIN	N/A	1
31	NUT (OUTLET VALVE-2ND) (SEE KIT 8-0605)	SEE KIT	2	89	BEARING	N/A	1
32	RECEIVER (2ND) (SEE KIT 8-0605)	SEE KIT	1	90	BOLT	27-8873	4
33	SPRING (2ND) (SEE KIT 8-0605)	SEE KIT	1	91	PUSH COVER	46-1562	1
34	PLATE (2ND) (SEE KIT 8-0605)	SEE KIT	1	92	SIGHT GLASS ASSEMBLY	46-1563	1
35	SEAT (2ND) (SEE KIT 8-0605)	SEE KIT	1	93	GASKET	26-0394	1
36	GASKET (2ND) (SEE KIT 70-0532)	26-0333	2	94	PLUG	N/A	1
37	PUSH COVER (2ND)	N/A	1	95	CRANKCASE	N/A	1
38	PISTON (2ND)	46-1346	1	96	CAP	N/A	1
39	O-RING (UNLOADER-2ND)	25-0610	1	97	O-RING	N/A	1
40	INLET VALVE ASSEMBLY (2ND)	8-0604	1	98	GASKET (SEE KIT 70-0532)	26-0344	1
41	LOCKNUT (INLET VALVE-2ND) (SEE KIT 8-0604)	SEE KIT	1	99	COVER	N/A	1
42	UNLOADER FORK (2ND) (SEE KIT 8-0604)	SEE KIT	1	100	OIL SEAL	N/A	1
43	SPRING (2ND) (SEE KIT 8-0604)	SEE KIT	1	101	BOLT	N/A	6
44	UNLOADER FORK GUIDE (2ND) (SEE KIT 8-0604)	SEE KIT	1	102	PULLEY	N/A	1
45	SEAT (2ND) (SEE KIT 8-0604)	SEE KIT	1	103	FAN	N/A	1
46	PLATE (2ND) (SEE KIT 8-0604)	SEE KIT	1	104	WASHER	N/A	6
47	SPRING (2ND) (SEE KIT 8-0604)	SEE KIT	1	105	BOLT	N/A	6
48	RECEIVER (2ND) (SEE KIT 8-0604)	SEE KIT	1	106	WASHER	N/A	1
49	BOLT (1ST)	N/A	12	107	WASHER	N/A	1
50	WASHER	N/A	12	108	BOLT	N/A	1
51	CYLINDER HEAD (1ST)	N/A	2	109	JOINT	N/A	1
52	GASKET (1ST) (SEE KIT 70-0532)	N/A	2	110	PIPING ASSEMBLY (LONG), 1ST	N/A	1
53	BOLT (2ND)	N/A	6	111	JOINT	N/A	1
54	WASHER	N/A	6	112	PIPING ASSEMBLY (LONG), 2ND	N/A	1
55	CYLINDER HEAD (2ND)	N/A	1	113	JOINT	N/A	1
56	GASKET (2ND) (SEE KIT 70-0532)	26-0335	1	114	JOINT	N/A	1
57	COMPRESSION RING (1ST)	N/A	4	-	GASKET KIT (INCLUDES #S 13, 36, 52, 56, 66, 81, 98)	70-0532	1
58	OIL CONTROL RING (1ST)	N/A	4				

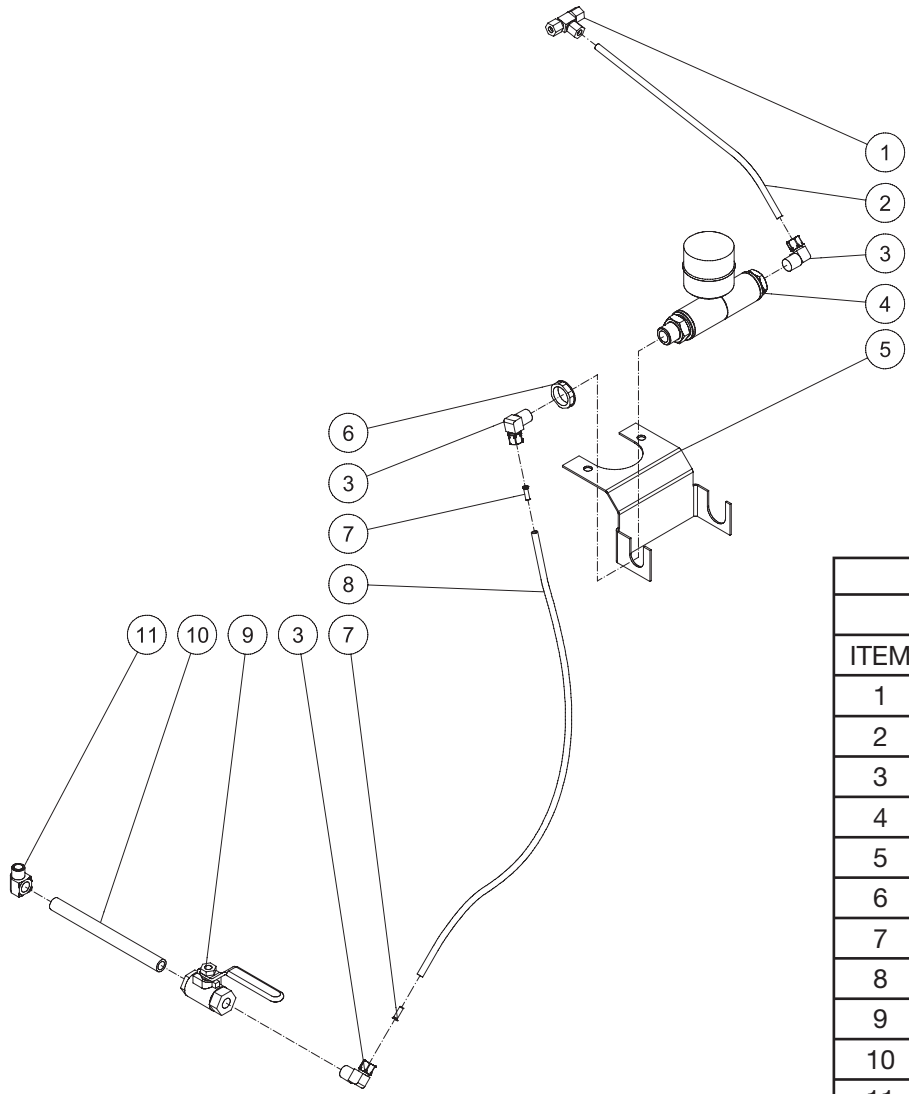
## LOW OIL SHUTDOWN (IX-0007)

IX-0007 111108 PJH			
LOW OIL SHUTDOWN			
REF #	DESCRIPTION	PART #	QTY
1	SCREW	27-8912	4
2	OIL SIGHT	N/A	1
3	OIL GAUGE	N/A	1
4	GASKET	N/A	1
5	OIL CONTAINER	56-0064	1
6	FLOAT	32-0998	1
7	LID	56-0063	1
8	WASHER	28-0002	4
9	LOCKWASHER	29-0006	4
10	BOLT	27-0015	4
11	COPPER TUBING *(ONE FOOT REQUIRED)	54-0034	1
12	ADAPTER	23-0328	1
13	ELBOW	23-0316	1
14	SIGHT GLASS COVER	20-1038A01	1
15	SCREW	27-9526	4
16	NIPPLE	24-0145	1



IX-0007 111108 PJH

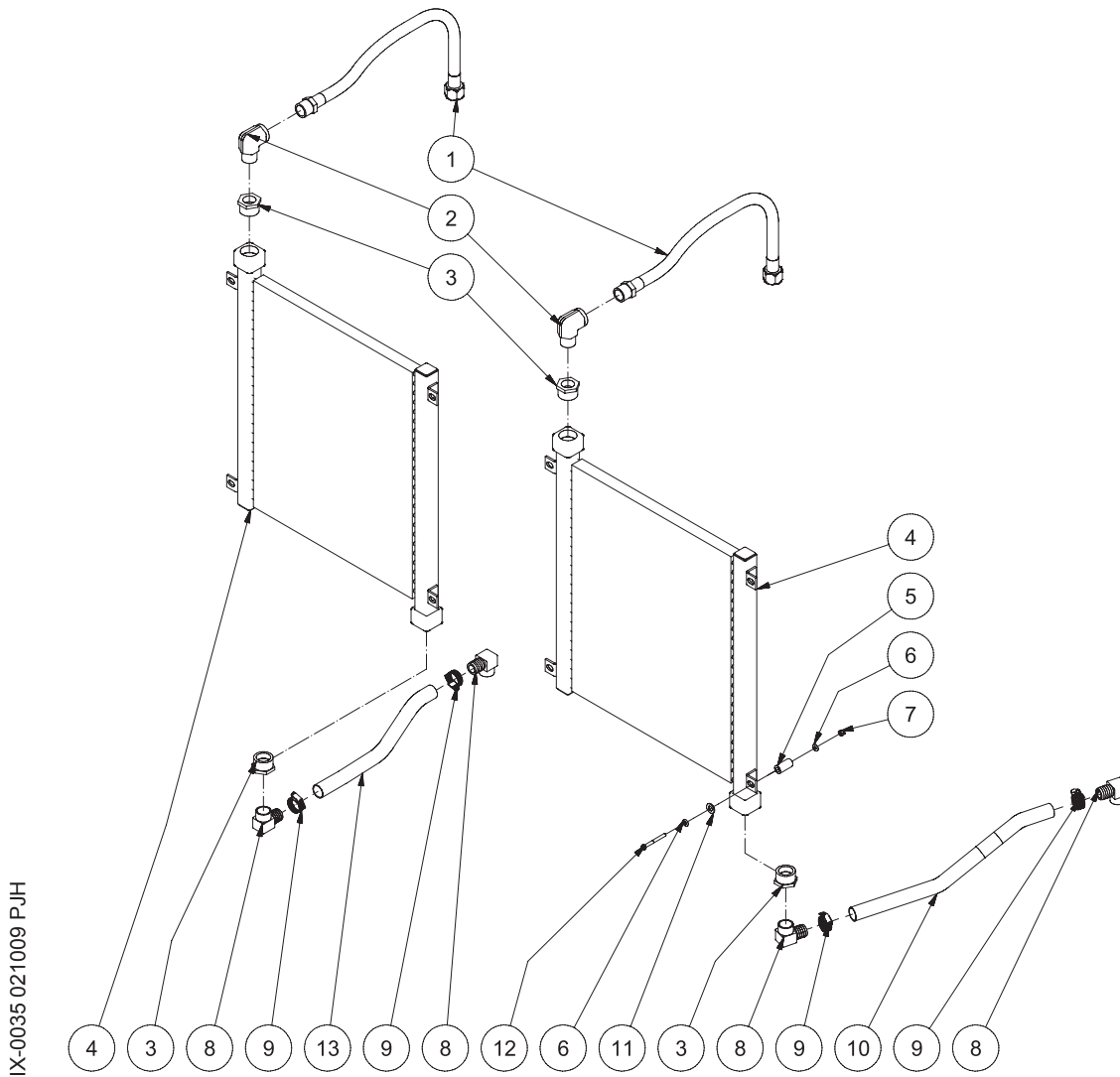
## AFTERCOOLER (IX-0032)



IX-0032 020909-PJH			
TANK DRAIN OPTION			
ITEM	DESCRIPTION	Mi-T-M #	QTY
1	TEE	23-0476	1
2	HOSE *(ONE FOOT REQUIRED)	15-0238	1
3	ADAPTER	23-0417	3
4	PNEUMATIC DRAIN	22-0448	1
5	BRACKET	13-0197A01	1
6	ELECTRICAL LOCKNUT	32-0108	1
7	TUBE SUPPORT	23-0425	2
8	HOSE *(TWO FEET REQUIRED)	15-0238	1
9	BALL VALVE	22-0002	1
10	NIPPLE	24-0315	1
11	ELBOW	23-0014	1

IX-0032 020909 PJH

## PNEUMATIC DRAIN OPTION (IX-0035)

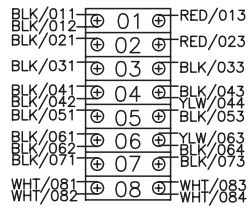
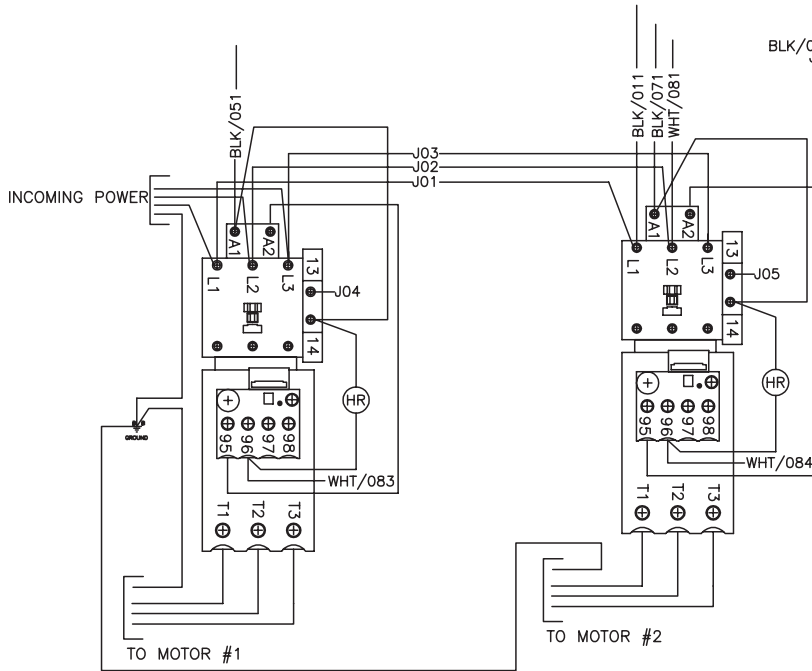
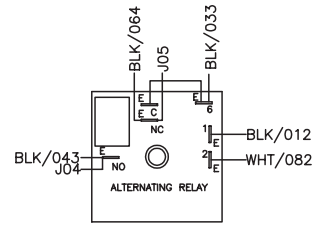
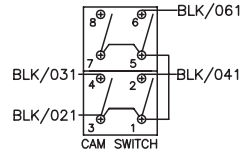


IX-0035 021009-PJH			
AFTERCOOLER OPTION			
ITEM	DESCRIPTION	PART #	QTY
1	HOSE	15-0283	2
2	ELBOW	24-0319	2
3	REDUCER	23-0456	4
4	AFTERCOOLER	33-0488	2
5	SPACER	20-1020	8
6	WASHER	28-0002	16
7	LOCKNUT	30-0155	8
8	HOSE BARB	23-0483	4
9	HOSE CLAMP	42-0018	4
10	HOSE *(THREE FEET REQUIRED)	15-0290	1
11	WASHER	28-0005	8
12	BOLT	27-0022	8
13	HOSE *(TWO FEET REQUIRED)	15-0290	1

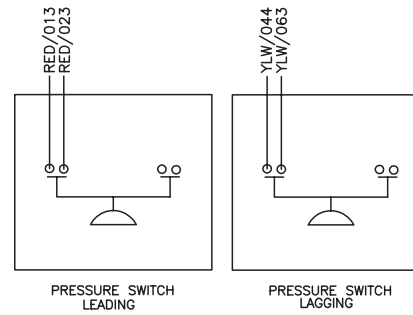
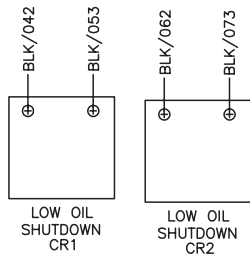
IX-0035 021009 PJH

## NOTES

# WIRE SCHEMATIC 200/230V 3 PHASE



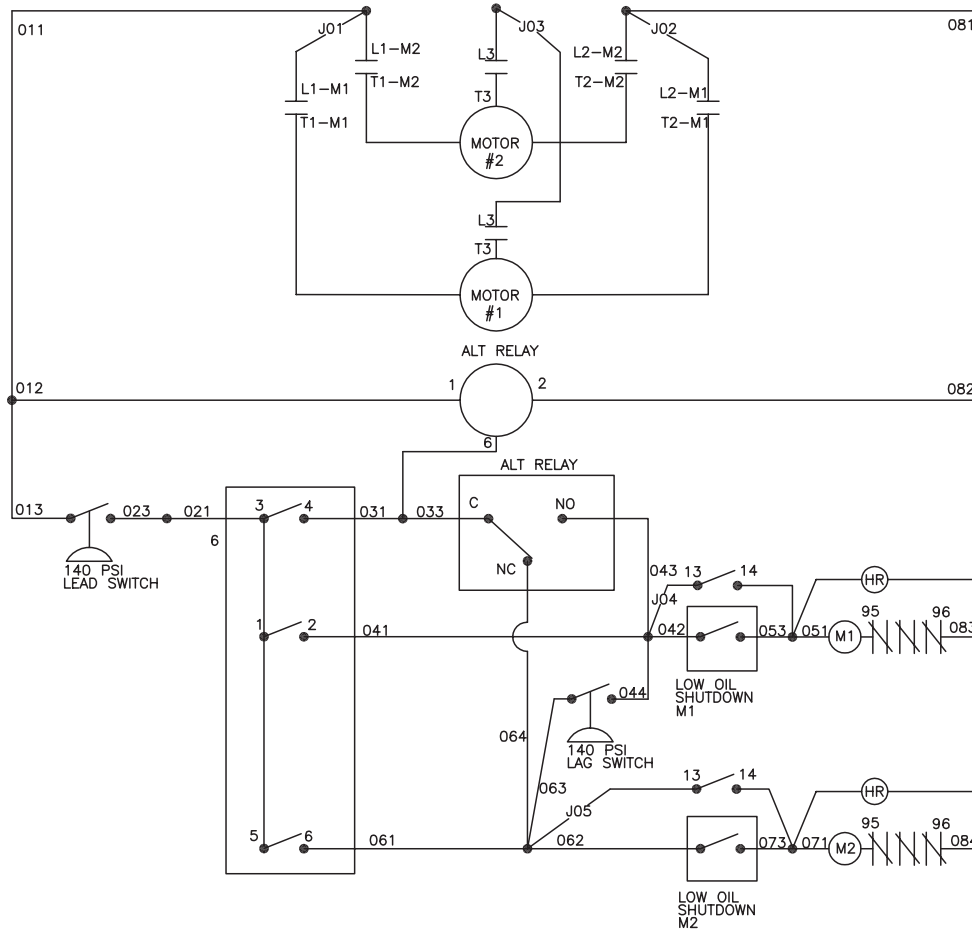
230V



WIRE SCHEMATIC 200/230V THREE PHASE DUPLEX 052115

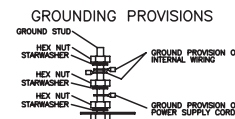
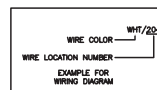


# WIRE DIAGRAM 200/230V 3 PHASE

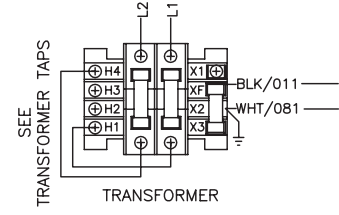
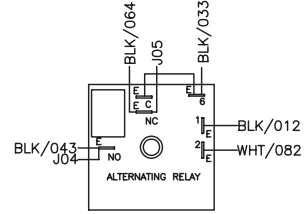
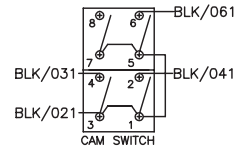
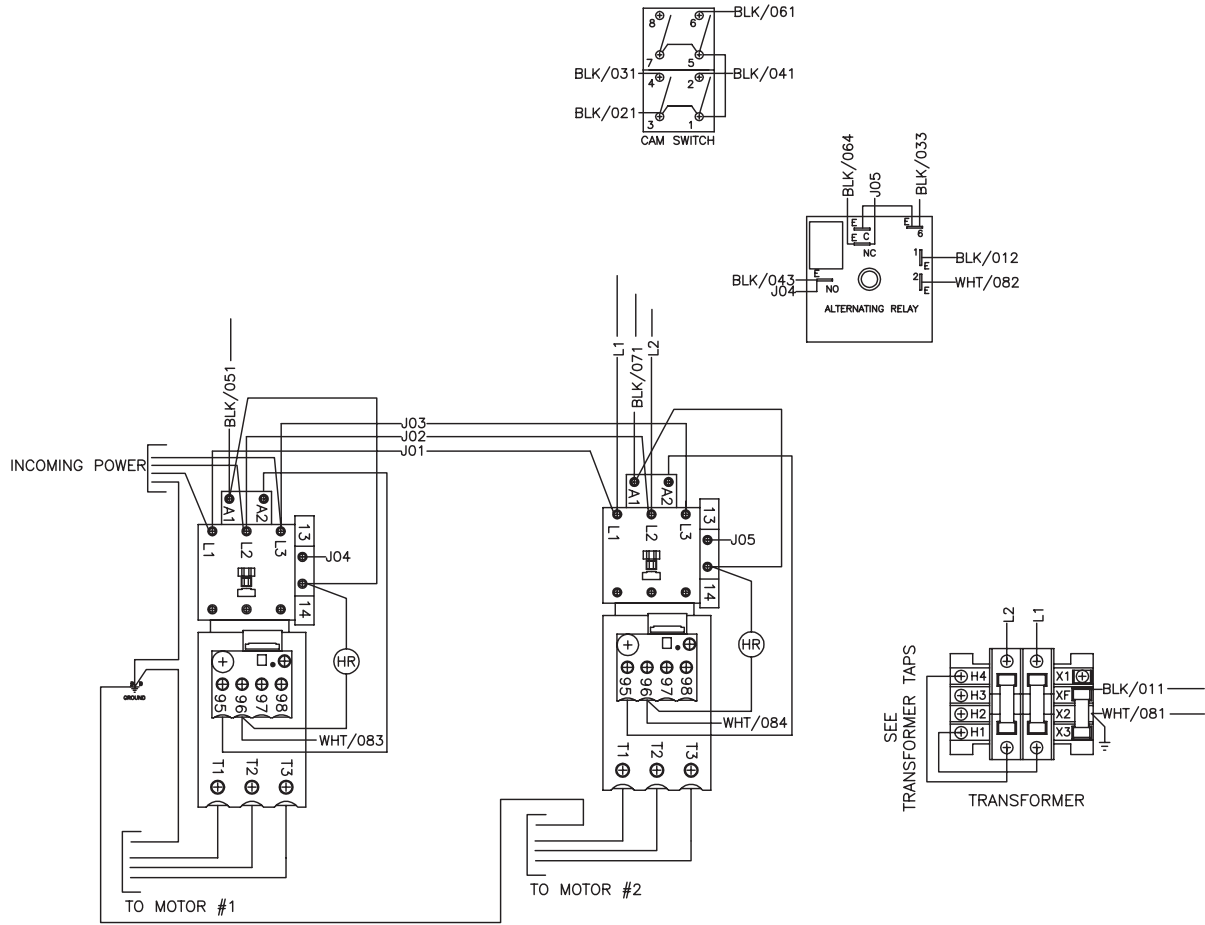


- NOTES:
- 1) ALL WIRES ARE 16GA UNLESS OTHERWISE SPECIFIED
  - 2) IF THERE IS NO LOW OIL SHUTDOWN, PLACE JUMPERS BETWEEN TERMINALS 04-05 AND 06-07

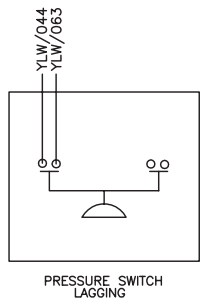
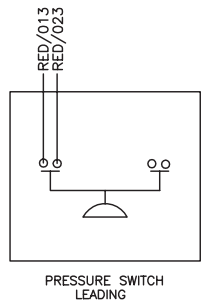
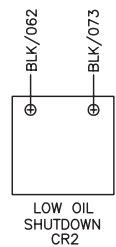
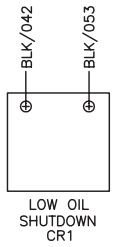
WIRING INFORMATION		
HP	VOLTAGE	WIRE SIZE
5	200	12
	230	14
7.5	200	10
	230	12
10	200	8
	230	10
15	200	8
	230	8
20	200	6
	230	6
25	200	4
	230	6
30	200	4
	230	4



# WIRE SCHEMATIC 460V 3 PHASE

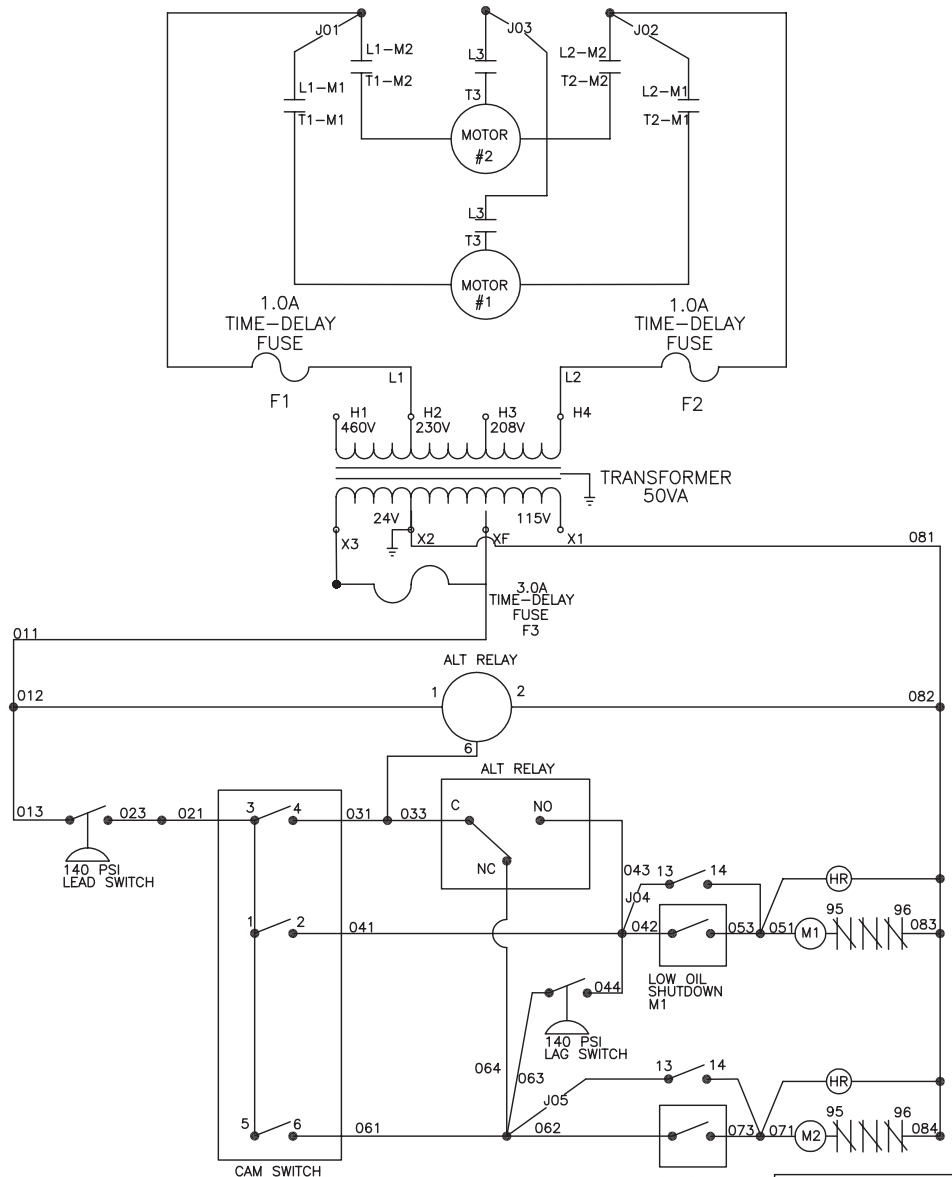


BLK/011	⊕ 01 ⊕	RED/013
BLK/012	⊕ 02 ⊕	RED/023
BLK/021	⊕ 03 ⊕	BLK/033
BLK/031	⊕ 04 ⊕	BLK/043
BLK/041	⊕ 05 ⊕	YLW/044
BLK/042	⊕ 06 ⊕	BLK/053
BLK/051	⊕ 07 ⊕	YLW/083
BLK/061	⊕ 08 ⊕	BLK/093
BLK/071	⊕ 09 ⊕	BLK/093
WHT/081	⊕ 10 ⊕	WHT/083
WHT/082	⊕ 11 ⊕	WHT/084

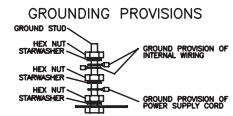
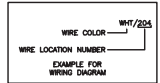


WIRE SCHEMATIC 460V THREE PHASE DUPLEX 052115

### WIRE DIAGRAM 460V 3 PHASE



- NOTES:**
- 1) ALL WIRES ARE 16GA UNLESS OTHERWISE SPECIFIED
  - 2) IF THERE IS NO LOW OIL SHUTDOWN, PLACE JUMPERS BETWEEN TERMINALS 04-05 AND 06-07



WIRING INFORMATION		
HP	VOLTAGE	WIRE SIZE
5	460	14
7.5	460	14
10	460	14
15	460	12
20	460	10
25	460	8
30	460	8

Manufactured by Mi-T-M  
50 Mi-T-M Drive, Peosta IA 52068  
563-556-7484/ Fax 563-556-1235